



City of
Jonesville

265 E. Chicago Street, Jonesville, MI 49250

(517) 849-2104
(517) 849-9037 Fax
www.jonesville.org

**CITY OF JONESVILLE
PLANNING COMMISSION AGENDA
WEDNESDAY, AUGUST 9, 2023, 7:00 p.m.
JONESVILLE CITY HALL, 265 E. CHICAGO STREET**

- 1. CALL TO ORDER / PLEDGE OF ALLEGIANCE / MOMENT OF SILENCE**
- 2. PUBLIC COMMENT**
- 3. APPROVAL OF AGENDA**
- 4. APPROVAL OF MINUTES**
 - A. June 14, 2023 Meeting
- 5. PUBLIC HEARING AND SUBSEQUENT ACTION**
 - A. None
- 6. NEW BUSINESS**
 - A. Recreation Master Plan Update
- 7. OTHER BUSINESS**
 - A. Project Updates
- 8. ADJOURNMENT - Next meeting Wednesday, September 13, 2023 at 7:00 pm**

[Discussion Item]

**CITY OF JONESVILLE
PLANNING COMMISSION
Minutes of June 14, 2023**

A City of Jonesville Planning Commission meeting was held on Wednesday, June 14, 2023, at the Jonesville City Hall, 265 E Chicago Street, Jonesville, MI. Chair Christine Bowman called the meeting to order at 7:05 p.m.

Present: Christine Bowman, Charles Crouch, Marty Ethridge, and Ryan Scholfield.

Absent: Marty Ethridge, Brenda Guyse and Annette Sands.

Also Present: Jeff Gray, Jacob Hurt (Region 2 Planning Commission).

Jim Ackerson led the Pledge of Allegiance and the moment of silence.

A motion was made by Charles Crouch and supported by Jim Ackerson to approve the agenda as presented. All in favor. Absent: Marty Ethridge, Brenda Guyse and Annette Sands. Motion carried.

Jim Ackerson made a motion and was supported by Ryan Scholfield to approve the minutes from May 10, 2023. All in favor. Absent: Marty Ethridge, Brenda Guyse and Annette Sands. Motion carried.

Jacob Hurt of R2PC reviewed amendments to the draft Recreation Plan. Next steps will include development of Goals and Objectives to be discussed at the July meeting. A draft of the Plan will tentatively be ready for review in August.

Manager Gray provided Updates.

The next meeting is scheduled for July 12, 2023, at 7:00 p.m.

The meeting was adjourned at 8:00 p.m.

Submitted by,

Cynthia D. Means
Clerk



City of
Jonesville

265 E. Chicago Street, Jonesville, MI 49250

(517) 849-2104
(517) 849-9037 Fax
www.jonesville.org

To: Jonesville Planning Commission
From: Jeffrey M. Gray, City Manager *JMG*
Date: August 4, 2023
Re: Manager Report and Recommendations – August 9, 2023 Planning Commission Meeting

6. A. Recreation Master Plan Update

[Discussion]

This agenda item is reserved for discussion of the draft update to the Recreation Master Plan. The revised draft is attached, along with a draft concept plan and notes for Wright Street Park are attached.

Commissioner discussion, comments and questions regarding the draft are encouraged. Your comments will be used to refine the draft, as we work toward presentation of the proposed plan to the public. *Please refer to the concept plan and notes, and the draft update to the Recreation Master Plan.*

7. A. Project Updates

This section of the agenda is reserved for an update on current and pending projects in the City.

Jeff Gray

From: Jacob Hurt <jhurt@mijackson.org>
Sent: Friday, August 4, 2023 11:57 AM
To: Jeff Gray
Subject: FW: Jonesville Park Concept
Attachments: 2023-08-03_Jonesville CONCEPT RENDERING smallpdf.pdf; 2023-08-03_Jonesville Trails.pdf

Jeff,

Here's the email from the LA with his conceptual renderings and notes about what he's laid out.

Thanks,

Jacob

From: Lydon, Patrick M <patrick_lydon@nps.gov>
Sent: Friday, August 4, 2023 8:35 AM
To: Jacob Hurt <jhurt@mijackson.org>
Subject: Jonesville Park Concept

Hi Jacob, attached is a working concept for Jonesville. Let me know what revisions you'd like to see on this, either with the layout or the text. I can make those changes by Friday the 18th.

I attached a marked-up version of the trails to better explain them to you.

red: .1 mile @ 10' wide providing access to pavilion/band shell

green: .1 mile @ 5' wide loop to dog park

blue: .2 mile @ 5' wide walking trail, fitness equipment and trail through wooded area at south.

purple: possible extension of a .3 mile loop

Total trails proposed:

.4 miles (red, green, and blue)

.7 miles (with purple)

General notes and amenities included:

1. I will add some additional text for things like the basketball court, I can also add in the fitness equipment along the trail if you'd like, I had it in there originally, but it was very small at this scale. I will probably put in text callouts or an icon for potential locations for conversation purpose with the town.
2. I realize the text is on the smaller size, I'll fix this on the next go around.

3. The band shell/event pavilion, I got into this a little deeper than I should have at this point but I was having fun! I saw this as a space where the community could hang out year round, the pavilion shown in blue (and kind of looks like a swimming pool... I'll change the color of the roof on future drawings) could double as a band shell but can also be used for community, or private gatherings and events. The area surrounding the pavilion has space for 2 fire pits, and seating. I'd like to do some additional sketches of this to show the design of this space more clearly. The location of this is not the best right now, this is not a very accessible location, there are no close roads or parking. This is why I made the trail 10' wide to the pavilion, this way emergency vehicles can access if needed or it can be opened for events possibly.
4. The 1 acre added to the north of the site seems to layout really nice with the dog park, another trail extension could be added to the north side of the dog runs. There was plenty of room for a smaller .22 AC run for small dogs, and a larger .5 AC run for larger dogs.
5. Rehab tennis courts, add 2 pickleball courts in place of 1 tennis court
6. Rehab basketball court
7. Proposed parking layout with more structure and guidance to maximize parking.
8. Baseball fields to remain as is.

Let me know your thoughts, I'll be out of the office the rest of today and most of Monday. Have a great weekend, talk soon.

Patrick Lydon, PLA, ASLA

Landscape Architect, Michigan Field Office

National Park Service - Rivers, Trails & Conservation Assistance Program

2651 Coolidge Road, East Lansing, MI 48823

E: patrick_lydon@nps.gov

C: 402.616.2140

www.nps.gov/orgs/rtca

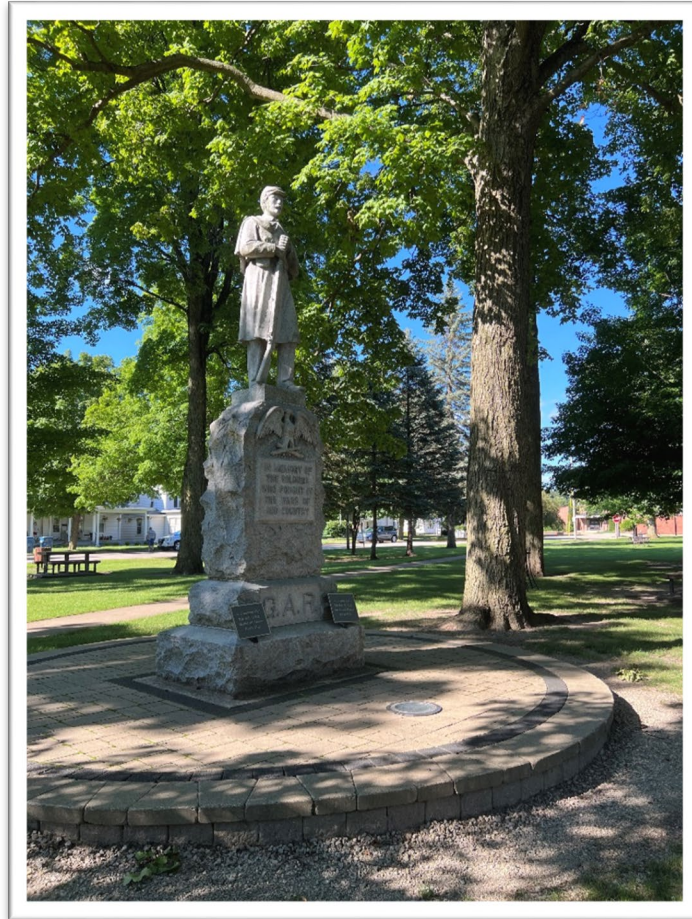


City of Jonesville 2023 – 2028 Recreation Plan

DRAFT: July 31, 2023

This page intentionally blank.





Carl Fast Memorial Park

Chapter 1

Community Description

City of Jonesville 2023-2028 Recreation Plan

This page intentionally blank.

Recreation planning plays an important role in maintaining the quality of life in a community. If a community is to provide effective recreational opportunities, it needs a way of identifying and solving current problems and anticipating future needs. Recreation planning is one means of obtaining a perspective on these problems; developing realistic alternatives; formulating goals, policies, and recommendations; developing criteria to measure change; involving people in the planning, design and decision processes; and providing eligibility to apply for grants from the Michigan Department of Natural Resources.

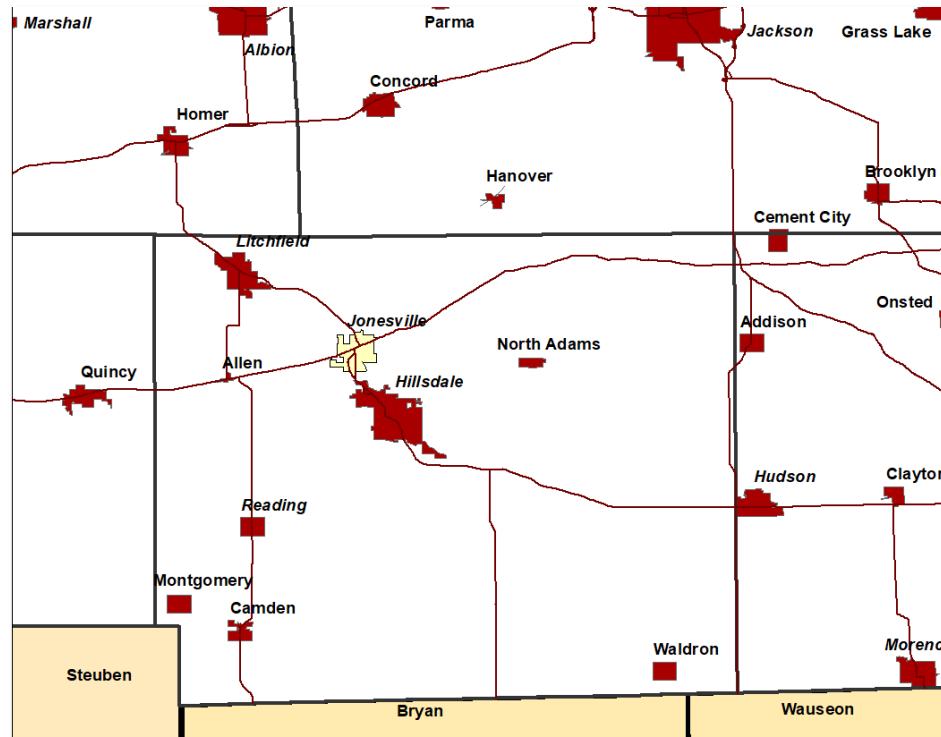
This 5-Year Parks and Recreation Plan presents an evaluation of the City's recreational needs and opportunities. It considers the existing amenities in and around Jonesville, the anticipated demand for additional or improved facilities, and the means for providing those facilities.

This plan will serve as a guideline for directing Jonesville in the operation and maintenance of existing and future facilities and programs to meet the recreational needs of its citizens. The plan will summarize long-term recommendations intended to guide the development of recreation opportunities, and describes an action and capital improvement program for implementation over the next five years.

A priority of the City of Jonesville is to develop and implement a recreation plan which responds to the recreational desires of their citizens and to plan for enhancements to parks and recreation programs. A sincere effort was spent in developing this plan which represents the projected needs for recreation facilities and services in Jonesville from 2023-2028. For example, the plan provides a clear picture of the recreational opportunities available to residents regardless of who provides them. Nontraditional recreation opportunities such as historic districts/structures and shopping opportunities are catalogued as well as traditional parks and recreation facilities.

Location

The City of Jonesville is located in northwestern Hillsdale County, close to Michigan's border with Northwest Ohio and Northeast Indiana. United States Highway 12 (US-12) and Michigan Highway 99 (M-99) traverse the community. Those thoroughfares provide access to the urbanized areas of Jackson, Ann Arbor, Detroit, Battle Creek, Kalamazoo, and Grand Rapids.



The City of Jonesville has an area of 2.9 square miles, and is surrounded by the following local units of government:

Nearby Local Units of Government	
City of Hillsdale	Hillsdale Township
Adams Township	Litchfield Township
Allen Township	Moscow Township
Fayette Township	Scipio Township

A Brief Socioeconomic Summary

The demographic composition of the City of Jonesville has an effect upon their recreational needs. Pertinent demographic components are listed below along with a brief paragraph describing the local situation. Each of the components is described in greater detail in Appendix A of this document.

- **Population History & Projections**

The 2020 population for the City of Jonesville was 2,176. The population of the City increased steadily between 1940 and 2000 although the population has decreased from 2,337 in 2000 to 2,176 in 2020. Based upon those patterns, the population in 2030 is projected to be approximately 2,260. *(Source: US Census Bureau)*

- **Age & Gender of the Population**

The groups defined as School Age (people aged 5 to 17) and Young Adult (people aged 25 to 44) comprised an estimated 22.9 percent and 21.9 percent, respectively, of Jonesville's population during the 2016 – 2021 time period. Adult (people aged 45 to 64) and Preschool (people aged 0 to 4) comprised an estimated 20.2 percent and 13.2 percent, respectively, of the population during that same time period. The smallest age groups during this time period were Older Adult (people aged 65 and older) and College Age (people aged 20 to 24), those being 13.8 percent and 6.4 percent, respectively. An estimated 48.6 percent of Jonesville residents were male. *(Source: American Community Survey)*

- **Household & Family Composition**

There were an estimated 897 households in Jonesville during the 2016 – 2021 time period. Families comprised an estimated 64 percent of these households, while an estimated 28 percent of households were comprised of people living alone. The average household size in Jonesville during the time period was 2.73 people and the average family size was 3.51 people. *(Source: American Community Survey)*

- **Racial & Ethnic Composition**

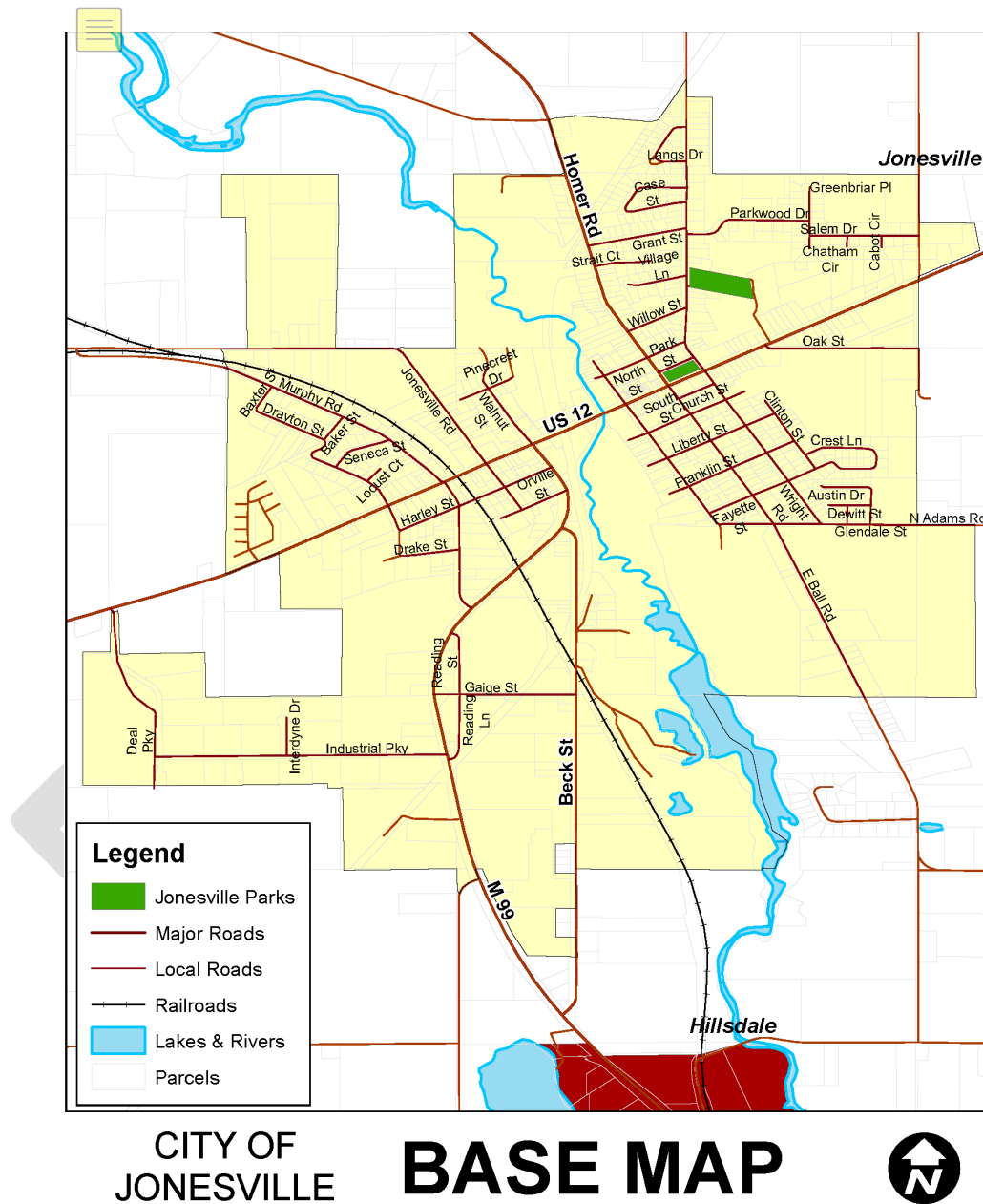
Race and ethnicity are not significant components of Jonesville's population given its homogeneity. Racial and ethnic minorities comprised an estimated 8.7 percent of city residents. *(Source: American Community Survey)*

- **Disabilities of Residents**

About 17.9 percent of Jonesville residents have some sort of disability, higher than Michigan's 13.9 percent. An estimated 2.3 percent of Jonesville residents between the ages of 5 and 17 had some type of disability during the 2016 – 2021 period, however, it was estimated that zero percent had an ambulatory disability. An estimated 19.3 percent of residents between the ages of 18 and 64 had some type of disability during the same time period with an estimated 10.7 percent with an ambulatory disability. An estimated 37.7 percent of Jonesville residents at least 65 years old had some type of disability including an estimated 27.1 percent with an ambulatory disability. *(Source: American Community Survey)*

- **Income**

The estimated median income for Jonesville households (\$45,329) was less than that for Hillsdale County households (\$54,110), Michigan households (\$63,498) and nationally (\$69,717) during the 2016 – 2021 time period. The estimated median family income for Jonesville families (\$52,875) was less than that for all Hillsdale County households (\$65,351), Michigan households (\$80,523) and nationwide (\$85,806). *(Source: American Community Survey)*



The Health of Residents

According to local health department estimates collected for the annual Michigan Behavioral Risk Factor Survey (MiBRF) conducted from 2019 through 2021, an estimated 40.2% of Branch, Hillsdale and St. Joseph counties residents were obese and another estimated 38.5% were overweight.¹ “Overweight and obesity substantially increase the risk for cardiovascular disease, type 2 diabetes, hypertension, lipid disorders, stroke, gallbladder disease, osteoarthritis, sleep apnea, respiratory problems, psychological disorders, stress, incontinence, and cancers of the endometrium, breast, prostate and colon,” according to that report.²

A couple factors of particular relevance to community growth, development, and planning contribute to unhealthy weight:

- “Inadequate community infrastructure limits the ability of people to be active. These include lack of accessible indoor and outdoor exercise facilities, neighborhood sidewalks, walking paths, and bicycle trails. Additionally, inclement weather, lack of adequate recreational opportunities, fear of unsafe neighborhoods, and unattractive/unpleasant local environments may prevent people from exercising.”
- “Programs and policies are necessary to promote smart community growth and the establishment of urban and rural environments supportive of physical activity. Active community environments provide access to safe favorable conditions for physical activity and promote the development of social support networks that encourage activity.”

The report recommends cooperation among state and local units of government and residents in the promotion of active environments, including the following actions.

- “Develop walkable communities by widening and maintaining or building sidewalks, safe roadway crossings, and aesthetically pleasing areas.”
- “Encourage bicycling by developing, maintaining, and promoting the use of bike paths.”
- “Require [that] all urban planning and re-design incorporate the concepts of active community environments and thereby promote physical activity.”

¹ Table 6 of [Health Indicators and Risk Estimates by Community Health Assessment Regions & Local Health Departments | State of Michigan | Selected Tables | Michigan Behavioral Risk Factor Survey | 2019 – 2021](https://www.michigan.gov/mdhhs/-/media/Project/Websites/mdhhs/Keeping-Michigan-Healthy/Communicable-and-Chronic-Diseases/Epidemiology-Services/2019-2021_MiBRFSS_Reg-LHD_Tables.pdf?rev=6b39940c42af4367bc59cf883b4591ac&hash=7C990C3EB31B2FEC702AEFFBFF47C96) (https://www.michigan.gov/mdhhs/-/media/Project/Websites/mdhhs/Keeping-Michigan-Healthy/Communicable-and-Chronic-Diseases/Epidemiology-Services/2019-2021_MiBRFSS_Reg-LHD_Tables.pdf?rev=6b39940c42af4367bc59cf883b4591ac&hash=7C990C3EB31B2FEC702AEFFBFF47C96).

² [Promoting Healthy Weight in Michigan through Physical Activity and Nutrition](#), part of a series entitled “Informing the Debate: Health Policy: Options for Michigan Policymakers”.



Carl Fast Memorial Park Playground

Chapter 2

Administrative Structure

City of Jonesville 2023-2028 Recreation Plan

This page intentionally blank.

Authorization

In response to identified recreation needs, the Jonesville Planning Commission has worked with the Region 2 Planning Commission to develop the *City of Jonesville 2023-2028 Recreation Plan* under the authority of Public Act 156 of 1917 (Recreation and Playgrounds). A copy of PA 156 of 1917 is available online at: [http://www.legislature.mi.gov/jvpdab552soxemek3mee3h55\)/documents/mcl/pdf/mcl-Act-156-of-1917.pdf](http://www.legislature.mi.gov/jvpdab552soxemek3mee3h55)/documents/mcl/pdf/mcl-Act-156-of-1917.pdf)

The City of Jonesville maintains its own parks and recreation committee under the authority of this legislation. The act “authorizes cities, villages, counties, townships and school districts to operate systems of public recreation and playgrounds” (*emphasis added*) and allows them to:

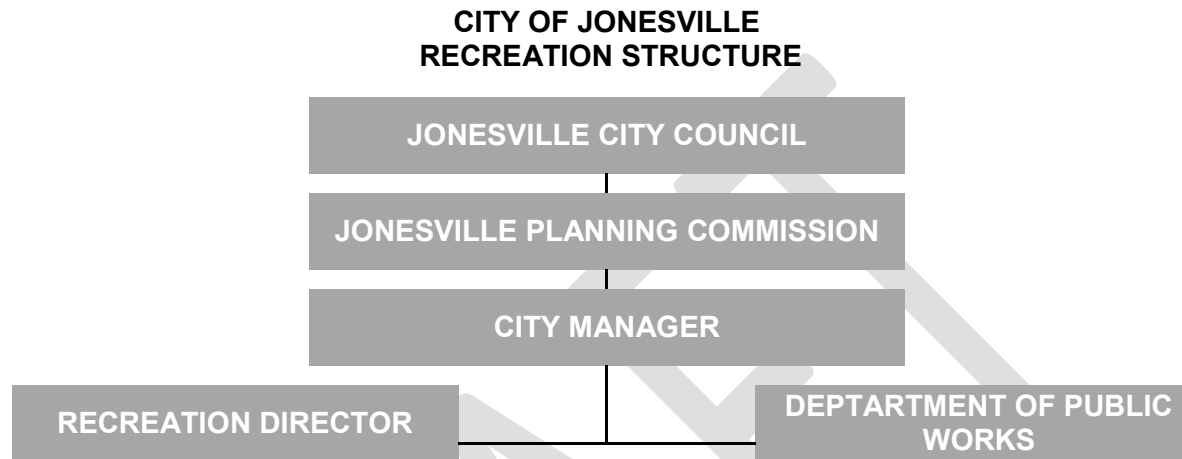
- “Operate a system of public recreation and playgrounds; acquire, equip and maintain land, buildings or other recreational facilities; employ a superintendent of recreation and assistants; vote and expend funds for the operation of such system.”
- “*operate such a system independently or they may cooperate in its conduct in any manner which they may mutually agree; or they may delegate the operation of the system to a recreation board created by any or all of them, and appropriate money, voted for this purpose, to such board*” (*emphasis added*).

The act also allows park systems to operate on “(1) property under its custody and management; (2) other public property;” and “(3) private property, with the consent of the owners.”

Organizational Structure

The Jonesville City Council, comprised of a Mayor and six Council members, maintains final authority over the City of Jonesville’s recreation programs and facilities. The City Council has tasked the Jonesville Planning Commission with the work of overseeing the development to the *City of Jonesville 2023 – 2028 Recreation Plan*. Recreational programs are administered by the Recreation Director, a function currently performed by the City Clerk as a part-time set of her responsibilities. Parks and recreation maintenance concerns are directed to the City Manager who administers the municipality’s Department of Public Works. The City may also utilize volunteers for specific projects as the need arises.

The following bodies are involved in the provision of municipal recreation:



Sources of Funding

The City of Jonesville has identified several potential sources of revenue for their recreation facilities and programs:

- General tax fund dollars.
- Grants awarded for specific projects.
- Donations from the general citizenry and philanthropic organizations.

General tax fund dollars are used for the maintenance and programming of City parks and recreation facilities and the cost of producing this plan. Grants are generally awarded for the acquisition of parkland and the development of a park or recreational facility (e.g., trails, playgrounds, picnic shelters, sports facilities, etc.). Donations to be used at the discretion of the City or for a specific facility or program are also accepted. A portion of the local match required of most grants may also come from the general fund or donations.

Grants for parks and recreational facilities are likely to come from several sources:

- *Michigan (DNR) Department of Natural Resources:*

- MDNR Michigan Natural Resources Trust Fund
- MDNR Land and Water Conservation Fund¹
- *Michigan (MDOT) Department of Transportation:*
 - MDOT Transportation Enhancement Program¹
- *Hillsdale County Road Commission:*
 - One percent (1%) annual allocation of state transportation (Act 51) funds for non-motorized facilities
- *Parks and Recreation Budgeting:*
 - The parks and recreation budget for the City of Jonesville is used almost entirely for the maintenance and programming of its parks.
 - Capital outlays are also made for projects including the development of this Plan, the preparation of grant applications, and the planning and construction of new recreation facilities.

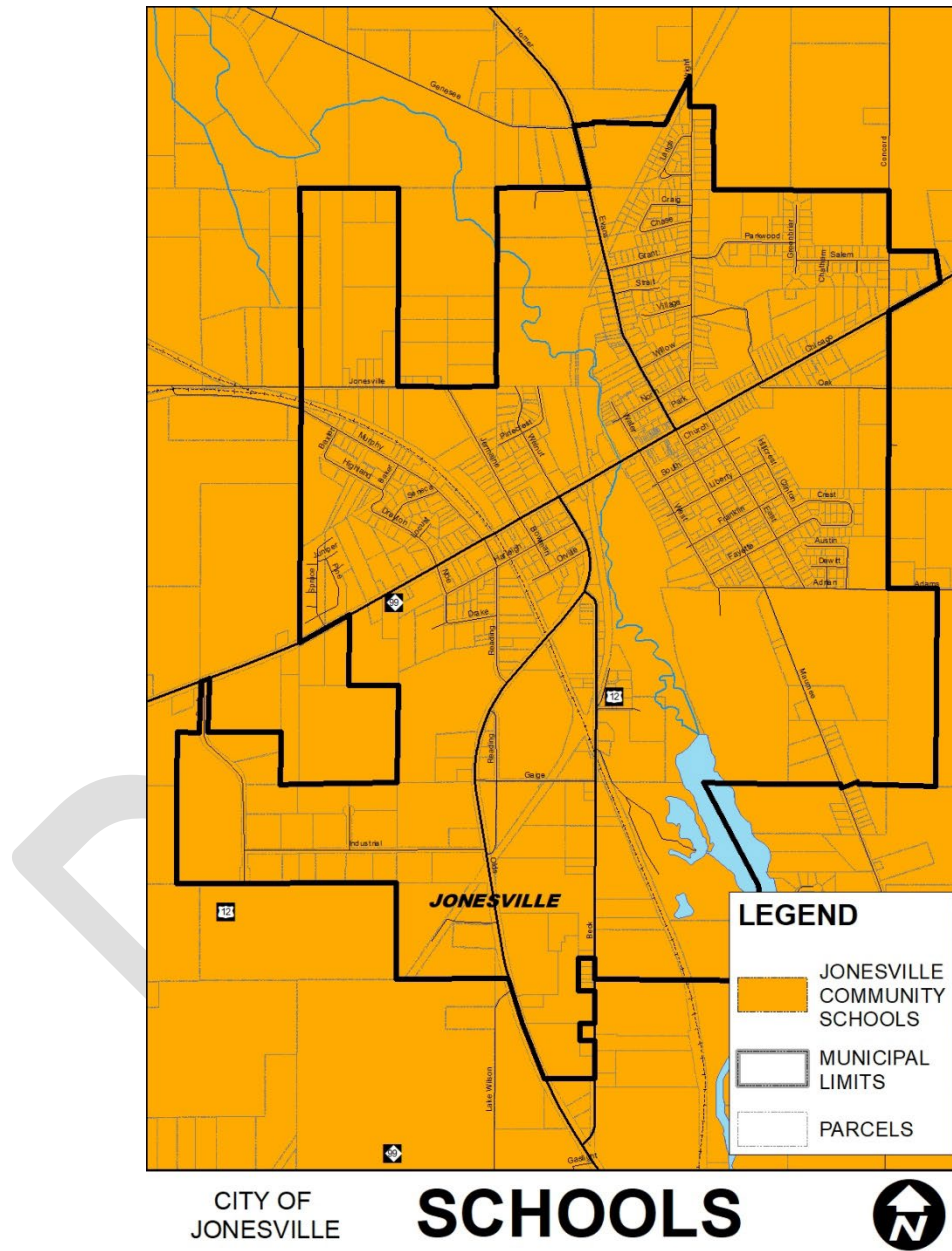
Relationships with other recreation providers as the City is not the only supplier of parks and recreational opportunities to the residents of Jonesville:

- *Schools:*
 - Jonesville Community Schools is also a major supplier of parks and recreational opportunities to City residents.
 - The Hillsdale County Intermediate School District (which includes Jonesville Community Schools) provides educational services to residents and local school districts.
- *Local, County, State Government and Private Providers:*
 - Hillsdale County and other nearby cities and villages, as well as some townships, maintain parks.

¹ This is a Federal program administered locally by the State of Michigan.

- The State of Michigan also provides a variety of recreational facilities in the form of state game, wildlife, and recreation areas; state historic parks; and state parks throughout the State (although none of those facilities are located in the City).
- A variety of private entrepreneurs and quasi-public agencies also provide recreation facilities and programs in and around Jonesville.

Please refer to Chapter 3 for a more detailed description of recreation facilities in the Jonesville area.



This page intentionally blank.



City recreation equipment

Chapter 3

Recreation and Resource Inventories

City of Jonesville 2023-2028 Recreation Plan

This page intentionally blank.

The recreation inventory is comprised of all the parks and recreation facilities and programs provided in the City of Jonesville, not just those owned and managed by the local units of government. The facilities and programs were identified through local knowledge and review of current and historic documents and maps.

Local Parks and Recreation Facilities

The City of Jonesville provides a total 6.2 acres of parkland and 1.4 miles of rail trail to its residents. Located in the heart of downtown, Carl Fast Memorial Park functions as part of the Chicago Street (US-12) streetscape. Wright Street Park provides a variety of facilities for more active recreation. The cemetery also provides open space in Jonesville.

City of Jonesville				
	Name	Acres	Facilities	BFA
A	Carl Fast Memorial Park	1.4	Playgrounds; Picnic Tables & Shelter; Clock; Statue; and Benches	2
B	Wright Street Park	4.8	Tennis; Playgrounds; Picnic shelter with bathrooms; Basketball; Baseball; and connecting trail to the high school baseball fields	2
C	Jerry Russell Trail	N/A	A 1.4 mile-long 10-foot wide Multi-Use Recreational Pathway, including an Interpretive Sign, Benches, Trash/Recycling Receptacles, and Plantings	5

Barrier-Free Access

It is important that the parks and recreation facilities operated by the City of Jonesville be accessible to people with disabilities. After all, 17.8 percent of all Jonesville residents had at least one disability in the year 2020. Accordingly, both of the city's parks and recreation facilities were also rated according to their level of barrier free access.¹ The number listed under the BFA column in those tables equates to the barrier-free rating listed below:

¹ The analysis of barrier free access was provided by the City of Jonesville, based upon its knowledge of the parks and understanding of barrier-free access. A professional analysis may produce different results.

Barrier Free Access (BFA) Analysis

Key	Description
1 =	None of the facilities/park areas meet accessibility guidelines
2 =	Some of the facilities/park areas meet accessibility guidelines
3 =	Most of the facilities/park areas meet accessibility guidelines
4 =	The entire park meets accessibility guidelines
5 =	The entire park was developed/renovated using the principal of universal design

Jonesville Community Schools are the institutions of learning for all of Jonesville. However, as a popular schools of choice, children living outside of the district also attend Jonesville Community Schools. Consequently, Jonesville Community Schools is a major provider of recreation facilities to the City as well as its students and boosters.

The Williams Elementary campus contains a variety of outdoor facilities. The Jonesville High School campus contains practice fields for football and soccer. The middle and high schools share the athletic facilities adjacent to Jonesville Middle School. All three schools have gymnasiums and are located in Jonesville.

Jonesville Community Schools

	Name	Acres	Facilities
D	Williams Elementary	86.6	Playgrounds; Basketball; Gymnasium; & Track
E	Jonesville High School		Gymnasium & Football & Soccer Practice Fields
F	Jonesville Middle School	19.6	Gymnasium & Softball Field
G	Athletic Facilities		Football Field (lighted) & Baseball Field

The Michigan Department of Transportation (MDOT) is also a provider of recreation facilities. MDOT maintains a rest area along M-99 in Jonesville known as Hill-Jo Bicycle Park. MDOT's Hill-Jo Trail, runs through Jonesville, Fayette Township, and the City of Hillsdale along M-99. Within Hillsdale, it connects to the Baw Beese Trail.

Michigan Department of Transportation

	Name	Acres	Facilities
H	Hill-Jo Bicycle Park	0.2	Picnic Tables
I	Hill-Jo Trail	5 mi	Biking/Walking/Jogging

A number of private and quasi-public institutions also provide recreation facilities within or near the City. For example, the Mill Race Golf Course, the Way-Back-In Campground, and the Jonesville Eagles provide easy access to important active recreation facilities. A community theater, a museum, and a public library are also available.

Private / Quasi-Public Facilities

	Name	Acres	Facilities
J	Jonesville District Library	<0.1	Summer Reading Program; Video Rentals; & a 28,000 Volume Library
K	Mill Race Golf Course	72.3	9-Hole Course; Driving Range; Putting Green; Pro-Shop, Snack Bar; & Leagues
L	Jonesville Eagles	12.8	4 Softball Fields; Snack Bar; & Clubhouse
M	Sauk Theater	1.3	Community Amateur Theater
N	Grosvenor House Museum	0.3	Group Tours; Craft Shows; & Holiday Celebrations
O	Way-Back-In Campground	84.5	Campsites (RV, Tent, Cabins); Playground; Basketball; Trails; and Canoe Rental

Park Standards and Types

A park and recreation plan should also recognize and use appropriate park standards. The National Recreation and Parks Association (NRPRA) recommends a minimum of 10 acres per 1,000 persons. This means that Jonesville should have 21-22 acres of parkland in order to meet the needs of the population in 2022. The combined parkland and recreational facilities offered by public, quasi-public and private institutions exceed that standard. According to the NRPRA, school facilities generally function as community parks.

Recreational facilities located on school grounds generally function as community parks. The City's Wright Street Park and Carl Fast Park function partially as community parks and partially as neighborhood parks. MDOT's roadside park, in general, functions as a mini-park. The various private and quasi-public facilities have a community-wide or even a regional function.

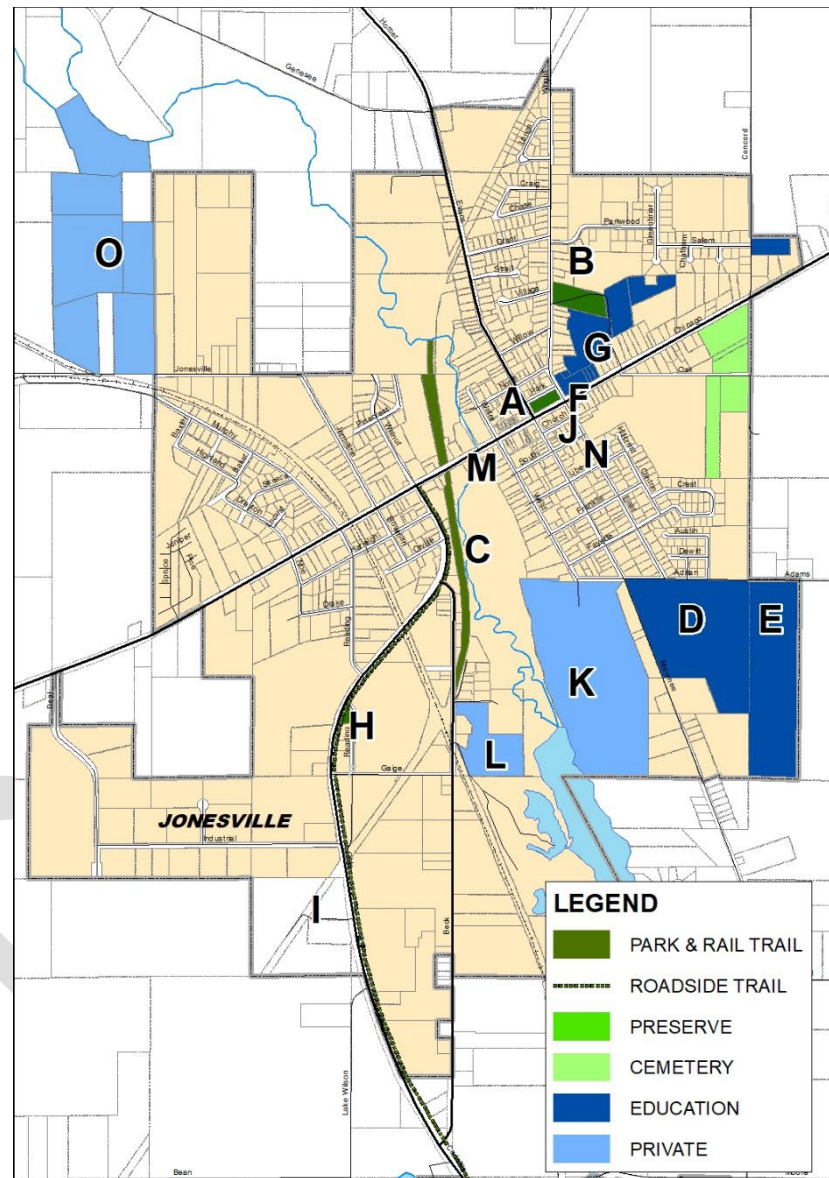


Grant-Assisted Parks and Recreation Facilities

The following recreation grants were awarded to the City of Jonesville through the Michigan Department of Natural Resources.

Recreation Grant History

Park Name	Proj. No.	Year	Usage
Wright Street Park	CM00-104	2000	The park is used on a daily basis
Jerry Russell Trail	TF13-037	2013	The trail was constructed during the summer of 2015

CITY OF
JONESVILLE**RECREATION**

Regional Parks and Recreation Facilities

A variety of other public agencies and private entrepreneurs also provide recreational opportunities to Jonesville residents.

State Parks

The State of Michigan maintains a number of recreational facilities within the region. For example, the Department of Natural Resources (DNR) maintains the Lost Nation, Somerset, and Adams State Game Areas in Hillsdale County. Additional state game and recreation areas and state parks are located in neighboring counties. The DNR also maintains nine (9) boat launches in Hillsdale County.

State of Michigan Recreational Facilities

State Parks

Cambridge Historical (Lenawee Co.)

Walter J. Hayes (Lenawee Co.)

State Game Areas

Adams (Mini) (Hillsdale Co.)

Sharonville (Jackson Co.)

Lost Nations (Hillsdale Co.)

Somerset (Hillsdale Co.)

Onsted (Lenawee Co.)

State Recreation Areas

Lake Hudson (Lenawee Co.)

Waterloo (Jackson Co.)

County Parks

Hillsdale County also provides several regional recreational facilities which are accessible to Jonesville residents.

Hillsdale County Parks

Bird Lake (Jefferson Twp.)

Cambria (Cambria Twp.)

Gateway (Hillsdale Twp.)

Hemlock Beach (Reading Twp.)

Lewis Emery (Hillsdale Twp.)

Sugar Bush

Lewis Emery County Park, the nearest facility to Jonesville, contains ponds and fishing docks, a community center, covered picnic shelters, playground equipment, and nature trails. Bird Lake Park contains a swimming beach and boat launch. The County Fairgrounds are located nearby in Hillsdale.

City of Hillsdale Parks

The nearby City of Hillsdale also contains a variety of municipal parks. Together, they provide a wide variety of recreational facilities including: picnic areas, playgrounds and open areas, fishing access, a trail, and a variety of active recreational fields and courts.

City of Hillsdale Parks

Baw Beese Trail	Cold Springs Park
Field of Dreams	Kee Moose Park
Sam LoPresto Park	Orville Myer Parkway
Owen Memorial Park	Sandy Beach
Stocks Park	Waterworks Park

Other Local Parks

Other local governments also provide parks and recreational facilities for their residents. Small cities and villages often provide a few recreation facilities. Townships may only provide one or two parks.

Local Colleges

Jonesville residents can also avail themselves of the learning opportunities and recreational facilities and programs provided by nearby colleges. Hillsdale College contains Slayton Arboretum, which is open to the public, and serves as a venue for a variety of collegiate sports. Jackson College (JC) maintains a local presence in Hillsdale County through its Clyde LeTarte Center.

Private and Quasi-Public Recreation Facilities

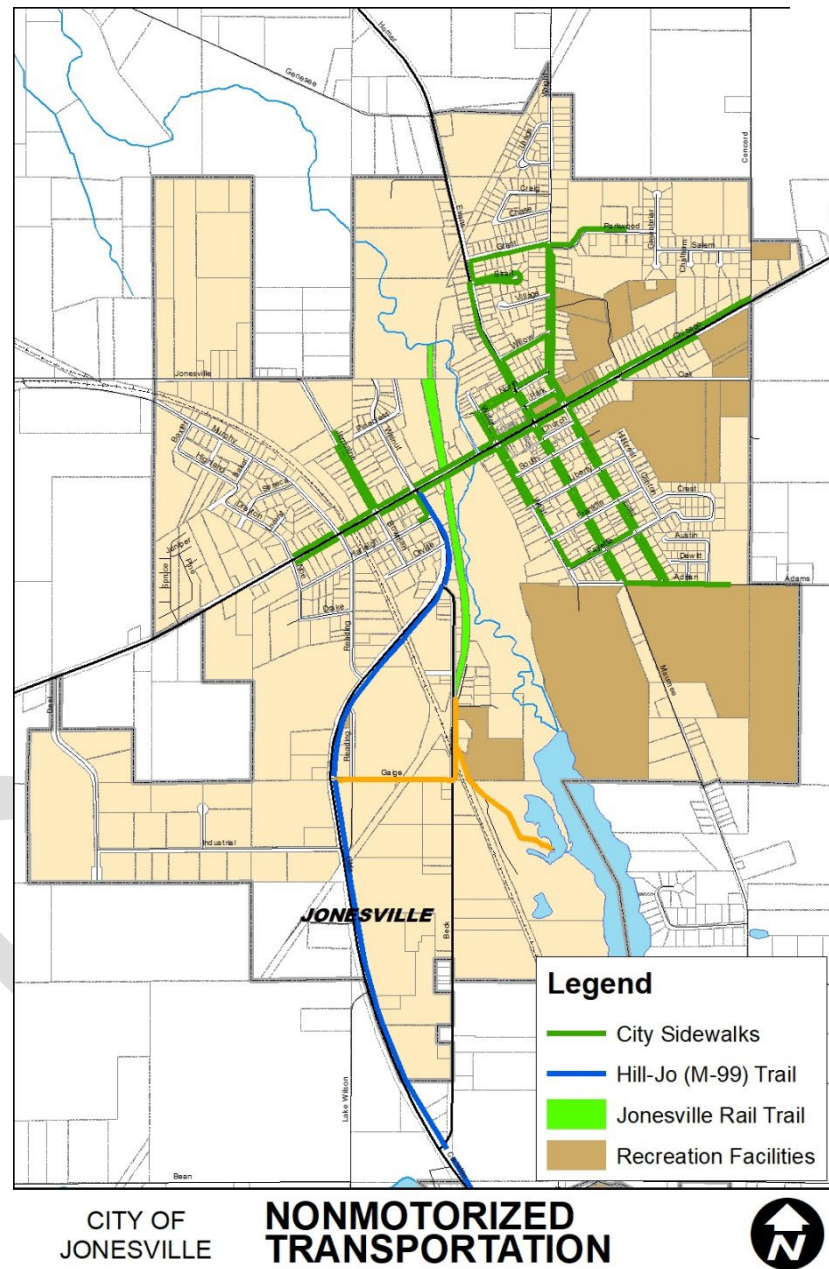
A wide variety of private entities also provide recreational facilities.

- **Golf Courses.** There are 16 golf courses within twenty miles of Jonesville, including the Mill Race Golf Course, according to golflink.com.²
- **Bowling Alleys.** L & J Lanes is located on M-99 between Jonesville and Litchfield. The facility hosts pool tables, a game room and snack bar, softball fields, and sand volleyball pits in addition to bowling lanes. Hillside Lanes is located on M-99 in Hillsdale.
- **Other Recreation Facilities.** The Silos are located in Hillsdale along M-99. The Silos contains a video arcade, go-karts and bumper boats, miniature golf, and a driving range.
- **Shopping and Eating.** Many people enjoy shopping and going out to eat, making Downtown Jonesville a recreation destination with its restaurants and shops. The proximity of Jonesville to the commercial areas in Hillsdale and other nearby communities increases the opportunities for this type of activity.

Sidewalks

Many of the main streets in the City of Jonesville include public sidewalks, which provide non-motorized access to some recreation facilities. The sidewalks also connect with the Hill-Jo Trail, providing non-motorized access to Hillsdale.

² <http://www.golflink.com/golf-courses/course-directory.aspx>



National and State Historical Sites and Heritage Routes

Jonesville contains two historic sites that have state and national significance.³

National and State Historical Sites		
Structure	Address/Location	Registers*
Grace Episcopal Church	360 E. Chicago Street	NR SR HM
Grosvenor House	211 Maumee Street	NR SR HM
*NR = National Register ; SR = State Register; and HM = Historic Marker		



Grosvenor House Museum | photo courtesy of US 12 Heritage Trail (Southwest Mich. Planning Comm.)

³ Michigan State Historic Preservation Office Historic

United States Highway 12 (US-12) was recognized as a Michigan Historic Heritage Route in 2004. The road began as a trail for mastodons and the Native Americans who hunted them approximately 10,000 years ago. The trail was converted into a federal highway—the second in the nation—in 1825.⁴

Resource Inventory

Jonesville is home to a wide variety of cultural and natural resources.

Recreational Programming

Jonesville and various institutions provide the following recreation programs to the general public.

Recreation Programs			
Program	Sponsor	Ages	Description
Youth Softball and Baseball	City of Jonesville	5-18	Softball and baseball programs are offered to City of Jonesville residents and non-residents. There are four girl, and five boy leagues.
Adult Beach Volleyball and Cornhole	L & J Lanes	16+	Regular League Play.
Sports Camps	Jonesville Community Schools	8-18	A variety of sports camps for girls and boys are held by Jonesville Community Schools each summer.
Bowling	L & J Lanes	All	Regular League Bowling.
Theater	Sauk Theater	All	Amateur Productions.
Soccer	AYSO	4-14	Soccer program for boys and girls offered to residents of Hillsdale County.

⁴ The information about the heritage route was gathered from www.us12heritagetrail.org



City youth recreation program | photo courtesy of City of Jonesville

Jonesville Riverfest

Riverfest is held annually on the 3rd weekend in May. The event, which began in 1974, “draws many people to [Jonesville] for the weekend with canoe races, [a] car show, music, food, and lots of fun” according to www.jonesvilleriverfest.org. Although Riverfest is nonprofit event, it would benefit from public access to the St. Joseph River within the city. A band shell located in or near Downtown Jonesville would also provide another music venue during the festival.

Soils

The primary soil types within Jonesville are placed in the Fox-Boyer Association which is characterized as “nearly level to steep, very deep, well drained sandy loams and loamy sand outwash plains.”⁵

⁵ All information is adapted from the Soil Survey of Hillsdale County, Michigan. Table 10 of the Soil Survey provides imitations for the development of camp areas, picnic areas, playgrounds, and paths and trails.

Water Resources

The St. Joseph Watershed covers the City of Jonesville. The St. Joseph River flows through the city south to north and the Jonesville Mill Pond is an impoundment of the river (please see the hydrology map). Wetlands are located primarily along the peripheries of local rivers and streams. Unfortunately, public access points to any of these important resources are not located in Jonesville.

Topography

The lowest areas of Jonesville are along the St. Joseph River, especially near the northwest corner of the city (elevations of 1,049 feet). The high points of Jonesville are located in its southwestern corner (elevations of 1,197 feet) and south of Adams Road (elevation of 1,230 feet), southeast of the city.

Land Use

Commercial uses are clustered along US-12 and M-99, south of that corridor. The majority of industrial uses are located in the southwest corner of the City of Jonesville. Residential uses of various densities occupy the remainder of Jonesville.

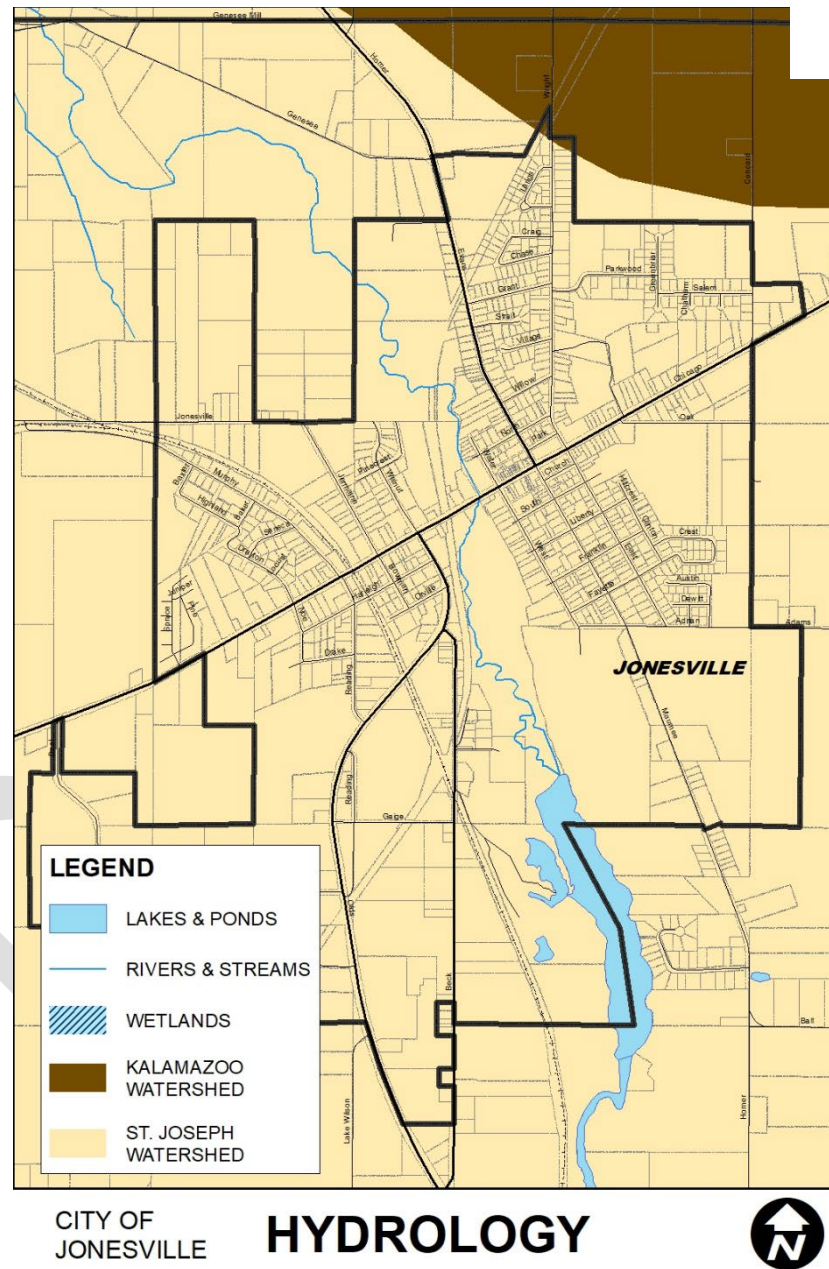
Other Trail Planning Efforts

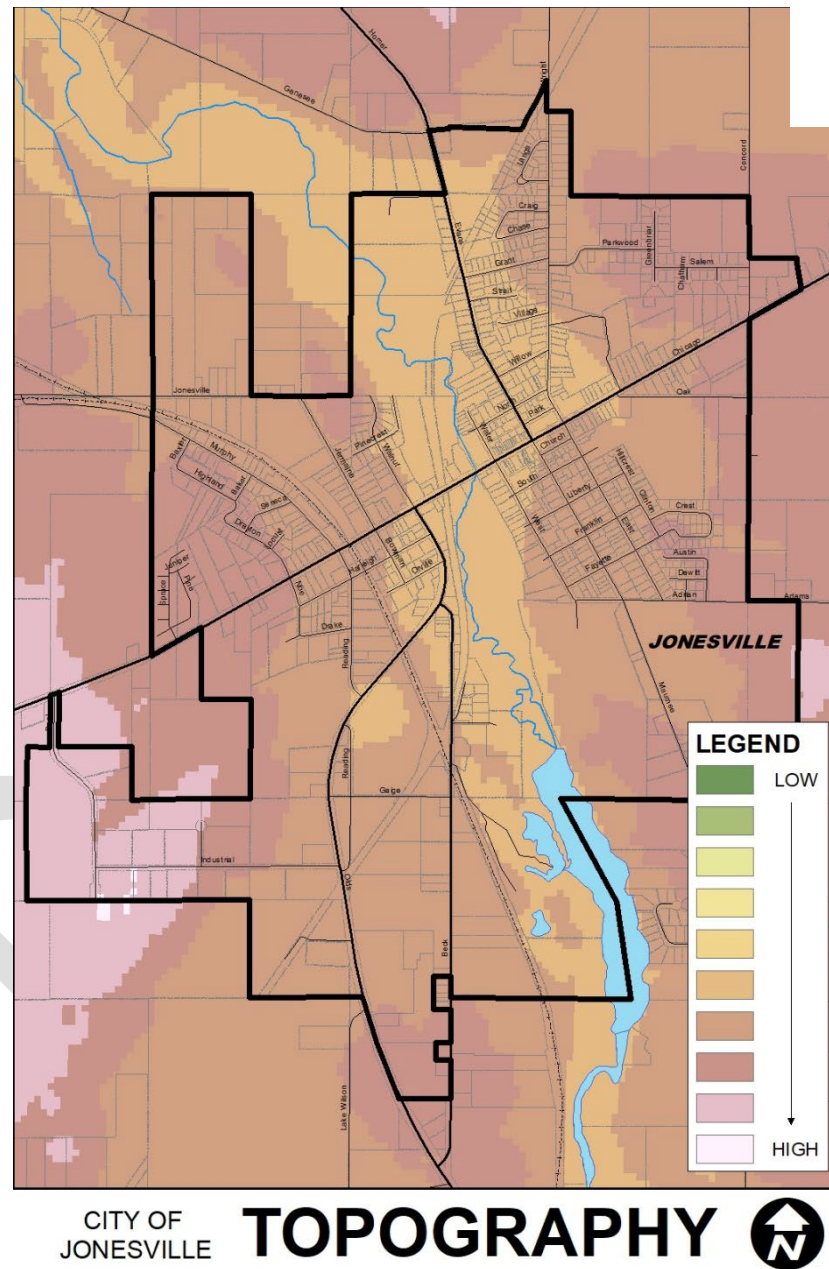
Several local, state, and national trail planning efforts also impact the Jonesville area:

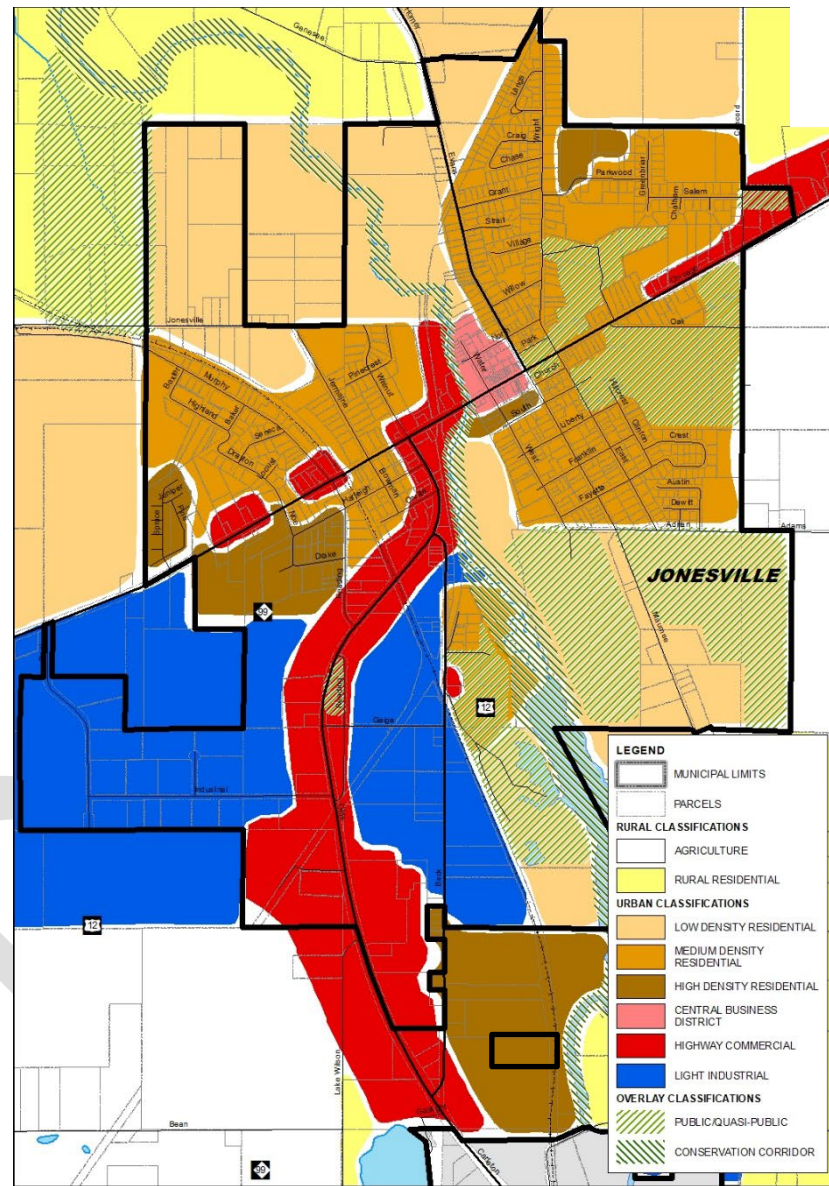
- Headwaters Recreational Authority
- Iron Belle Trail
- North Country National Scenic Trail

Summaries of those efforts are located in Appendix D.









CITY OF JONESVILLE **FUTURE LAND USE** 



Chapter 4

Descriptions of the Planning and Public Input Processes

City of Jonesville 2023-2028 Recreation Plan

This page intentionally blank.

Description of the Planning Process

The development of the *City of Jonesville 2023-2028 Recreation Plan* included the following steps:

- The City of Jonesville recognized the need to update their Recreation Plan
- The City of Jonesville contracted with Region 2 Planning Commission to assist the Jonesville Planning Commission in the development of the 2023-2028 edition of the Recreation Plan
- The City of Jonesville Planning Commission conducted a survey of Jonesville Area residents, business owners, and park and recreation consumers
- Region 2 staff updated the community description; administrative structure; recreation and resource inventories; and descriptions of the planning and public input processes chapters of the Plan, including revised mapping, and reported the findings to the City of Jonesville Planning Commission
- The City of Jonesville Planning Commission utilized the input collected from the various public involvement efforts and the information produced by Region 2 staff to revise the goals and objectives and action program chapters of the Plan
- The City of Jonesville Planning Commission provided the Plan for public review from [REDACTED] through [REDACTED]
- The City of Jonesville Planning Commission held a public hearing on [REDACTED], approving the Plan and recommended adoption by the City Council and Township Board
- The City Council adopted the Recreation Plan on [REDACTED]



Photo of Wright Street Park Public Input Session

Description of the Public Input Process

A variety of methods were employed to incorporate public input into the development of this Joint Recreation Plan:

- *City of Jonesville Planning Commission Meetings:*

All meetings of the planning commission are open to the public.

- *Public Input Session:*

The City of Jonesville Planning Commission and Region 2 Planning Commission staff planned and hosted a public input session at Wright Street Park on October 25, 2022, where they presented potential improvements for the park to community residents. The event consisted of five stations where Jonesville Planning Commission members and Region 2 staff fielded questions from residents about the recreation planning process and provided index cards so that participants could share their opinion on

proposed park improvements they would like to see. Eighteen comment cards were completed during the session. The responses from the public input session can be summarized as follows (please see Appendix B for a complete list of responses):

- *Public Input Responses:* The top responses from the public input session were:

- Fourteen people mentioned the potential addition of a dog park to Wright Street Park, making it the most popular suggestion, although two of the responses were not in favor of it.
- The need for more, or improved, parking at Wright Street Park was mentioned twelve times. Twelve people also mentioned the band shell as a potential addition to the park, although one of the responses was not in favor of it.
- Eleven suggestions were offered for a splash pad as well as for new, more, or improved or renovated playground equipment for the park.
- Pickleball was mentioned nine times, with six people offering it as a replacement for the Wright Street Park tennis courts and three people opposed to adding pickleball courts.
- Improved connectivity through the addition of new nonmotorized walking trails or sidewalks was suggested eight times.
- Additional suggestions from the public input session, each mentioned three times, included:
 - The need to resolve the restroom situation at Wright Street Park.
 - Update or expand the basketball courts.
 - Little free libraries at Wright Street Park and Carl Fast Park.
 - Beach volleyball.

- *Recreation Survey:*

An online survey was conducted throughout October and November 2022, supplemented by paper surveys. Using the responses from the previous Jonesville & Fayette Township Joint Recreation Plan as a supplement for general recreation survey questions, this survey was focused on pedestrian/bicycling behaviors to better understand non-motorized recreation within the city. The 146 responses can be summarized as follows (please see Appendix B for complete survey results):

- *The Respondents:* A good cross-section of Jonesville's (and beyond) population was represented:
 - Approximately 44 percent of respondents were patrons of City parks and recreation programs and approximately 85 percent were Jonesville (66%) or Hillsdale County (19%) residents.
 - Forty-one percent of respondents represented the age groups, 35-44 years old (26%) and 44-54 years old (15%), most likely to have children participating in the City's youth recreation programs. Approximately 22 percent of respondents were under the age of 18 and 25 percent were 55 years or older, both demographics who might require particular focus when planning recreation opportunities.
- *Visiting Area Parks, Pedestrian & Biking Patterns:* Most respondents were active area parks and recreation consumers:
 - Thirty-six percent of survey respondents reported visiting an area park more than 15 times in the past year and an additional 54 percent visited a park between one and twelve times during the same time period.
 - Respondents reported regularly walking and/or biking in Jonesville, with 37 percent choosing to walk or bike more than 15 times in the last year. Fifty-three percent chose to walk or bike at least once a month.
 - Exercise (73%) was the top reason given for walking or biking, with leisure (68%) and socializing (38%) also ranking highly.
- *Pedestrian and Biking Infrastructure Needs:* The consensus of respondents was that the City should concentrate on improving existing, and adding new, pedestrian infrastructure:
 - More than two-thirds of respondents (68%) felt that more multi-use paths would increase pedestrian activity in the City, while sixty-one percent thought additional sidewalks, or improvements to existing sidewalks, would be beneficial. Survey respondents also made note of potential roadway safety changes that would benefit pedestrian connectivity with twenty-nine percent citing additional road crossing opportunities or improvements and 26 percent mentioning a desire for traffic calming to slow vehicle speeds.
 - Undesirable, or lack of, facilities and paths (45%), poor surface conditions (35%), and unsafe crossings (28%) were all identified as obstacles that prevent respondents from walking or biking within the City.
 - Approximately 68 percent of respondents stated that they would walk and/or bike more if the identified obstacles were addressed and improvements were implemented. Only five percent responded that, even with these issues addressed or improvements in place, they would not increase their pedestrian activity.

- *Jonesville Recreation Programs:* Youth softball and baseball programs are important elements of the City's recreation program:
 - Thirty percent of respondents had a member of their household participating in these programs, although this survey was administered when the softball and baseball programs were not in season.

- *Stakeholder Interviews:*

Fifteen community stakeholders were identified for interviews regarding parks and recreation facilities and programming in Jonesville. Seven stakeholder interviews were conducted in April and May 2023 covering fourteen questions. A list of invited stakeholders along with anonymous responses can be found in Appendix B. Among the highlights:

- *Jonesville Youth Softball and Baseball Programs:*
 - Interviewees spoke very highly of these programs but there was a recognition that the fields could use some updating or even the addition of a third field due to the heavy use of the existing fields.
- *Improvements to Wright Street Park:*
 - Redevelopment of the tennis courts at Wright Street Park was discussed with interviewees offering up pickleball, permanent concrete cornhole boards, and parking as potential uses for that section of the park.
 - Improved parking at Wright Street Park was mentioned frequently by interviewees.
 - Other changes to the park mentioned by the stakeholders were the addition of a dog park and improved nonmotorized trails through the park and the City.
- *Nonmotorized Trails:*
 - Interviewees were in favor of more and improved nonmotorized trails throughout the community.
 - Adding bodyweight exercise stations to a segment of trails, specifically in Wright Street Park, was suggested.

One Month Review Period

The *City of Jonesville 2023-2028 Recreation Plan* was submitted for public comment beginning on [REDACTED] and ending on [REDACTED]. The plan was available for review in the City offices as well as the Jonesville District Library. The Recreation Plan was also available for review online at www.jonesville.org. Members of the City of Jonesville Planning Commission briefed local civic organizations during the comment period. No comments were submitted to the City of Jonesville Planning Commission.

Public Hearing

A public hearing on the *City of Jonesville 2023-2028 Recreation Plan* was held on [REDACTED] at 7:00 pm in City Hall, during a meeting of the City of Jonesville Planning Commission. The hearing took place prior to the vote on the resolution recommending adoption of the Plan by the Jonesville City Council. [REDACTED] comments were made during the public hearing.

Hillsdale County and the Region 2 Planning Commission

The City must provide a copy of the *City of Jonesville 2023-2028 Recreation Plan* to Hillsdale County and the Region 2 Planning Commission. The Plan was transmitted to them on [REDACTED].



Public Input Session | photo courtesy of City of Jonesville

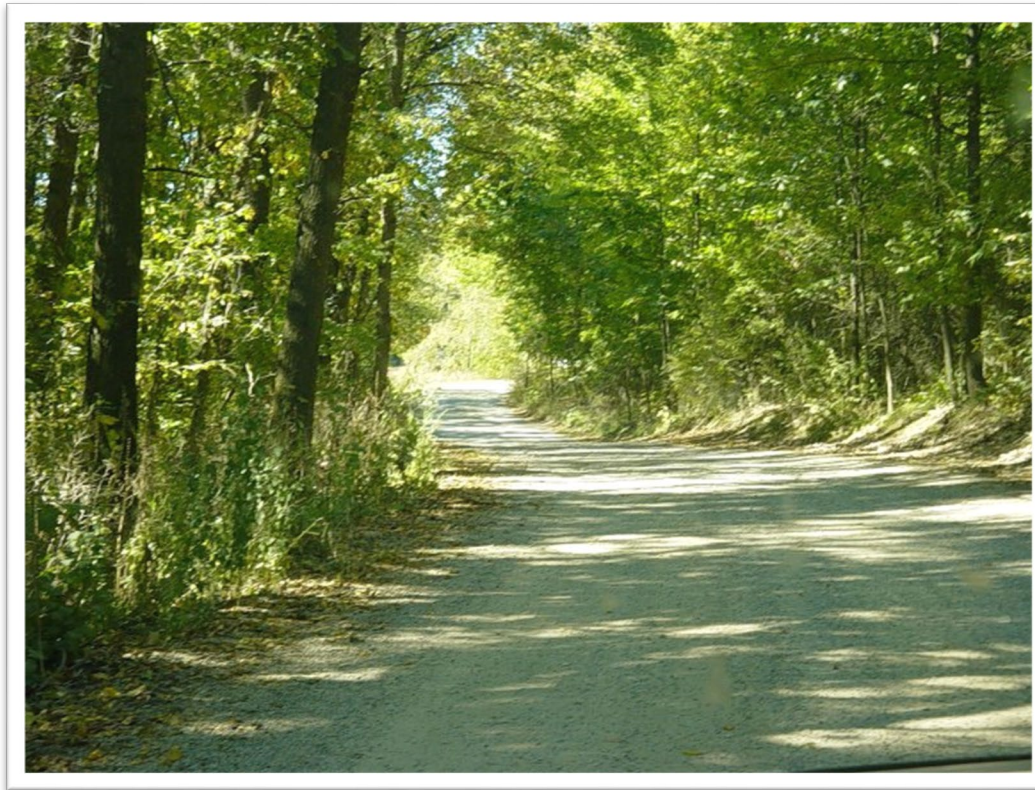


Photo courtesy of Way Back In Campground and Jennie Prater

Chapter 5

Goals and Objectives

City of Jonesville 2023-2028 Recreation Plan

This page intentionally blank.

Goal and Objectives

The goals and objectives described in this chapter are the result of community input gathered through public meetings, surveys, and stakeholder interviews and focus on three key areas: Wright Street Park, Carl Fast Park, and increased connectivity through a prioritization of sidewalk improvements and installations and nonmotorized trail development.

Goal 1 – Improvements to Wright Street Park

The overwhelming majority of public feedback centered on potential improvements to Wright Street Park, which served as the basis to formulate the objectives for this goal. The following graphic will serve as a guide for the location of potential improvements to Wright Street Park.



Basic information for each of the parcels identified in the above graphic:

- Parcel A: current parking for Wright Street Park with a total size of 0.53 acres.
- Parcel B: located on the property of Jonesville Community Schools with a total size of 0.54 acres, this parcel currently contains a few natural trails. There is an informal understanding with the school corporation that this site could be used for future parking.
- Parcel C: former location of the tennis courts and current location of the basketball courts this parcel contains 0.50 acres.
- Parcel D: current location of playground equipment this parcel contains 0.16 acres.
- Parcel E: located directly west of the existing park shelter this parcel contains 0.25 acres.
- Parcel F: located between the park's ball diamonds and the Jonesville Community Schools football field this parcel contains 1.33 acres.
- Parcel G: the "Drake" parcel contains approximately 1.0 acre and is not currently part of Wright Street Park but has been offered to the City by the property owner with the stipulation that the land be used for a community dog park.

Objective 1.1: Create an Off Leash Dog Park on the "Drake" Property (parcel G)

Thanks to a very generous donation by the property owner, one acre of land will be added to Wright Street Park with the stipulation that the property be utilized as a dog park.

- The creation of a dog park at Wright Street Park was mentioned 14 times during the gathering of public input for the recreation plan project, more than any other desired improvement.
- The creation of nature trails was also mentioned numerous times as a desired improvement. Given the wooded characteristics of parcel G it appears to lend itself to the creation of this type of trail. As a result, the feasibility of developing nature trails on this parcel, in addition to the dog park, should be explored.
- ***Case Study: Cass City (MI) Bark Park***
 - An unused plot in the village's municipal park system, the Cass City Bark Park, calls for a 100' x 150' large dog area and a 40' x 90' small dog area, each with a double-gated entry for safe transfer in and out of the park. The fenced area will extend into the woods for shade. Also planned are benches, waste baskets, agility equipment, and water station.

- The half-acre Cass City Bark Park had an initial budget of \$28,000 and sought to raise \$14,000 through Michigan Economic Development Corporation's (MEDC) Public Spaces Community Places program to access an additional \$14,000 in matching funds. The project raised a total of \$18,010, exceeding its initial goal, successfully securing its MEDC matching funds. The Cass City Bark Park was scheduled to open in summer 2023.

Objective 1.2: Improve the Parking at Wright Street Park (parcel A)

Although demand for parking at Wright Street Park is at its peak between Memorial Day and July 4 and during football season improving the parking and/or adding additional parking at the Park was mentioned 12 times during the gathering of public input, making it the second most requested improvement.

Guidelines for unpaved parking areas found in the University of Tennessee's Institute of Agriculture's UT Extension CPA Info #222: "Estimating the Number of Parking Spaces per Acre" reveals:

- The typical parking space is 180 square feet (10'x18')
- A one acre (43,560 sf) rectangular parcel utilizing six (6) rows of parking with 180 sq. ft. spaces and 24-foot (two-way) drive lanes will produce approximately 150 parking spaces.
- A one acre parcel with obstacles (trees, etc.) or imperfections will yield approximately 90 parking spaces.

Improvements to the parking at Wright Street Park should focus primarily on Parcel A where parking is currently provided for park patrons. Utilizing the University of Tennessee's metrics for parking indicates the following:

- Assuming an 85 percent utilization factor given Parcel A's irregular shape covering 0.53 acres should result in 68 spaces.
- Parcel B, with trails currently traversing it, is owned by Jonesville Community Schools could potentially be available to the City for park improvements, including parking. Although parking is an option for this site, that is not its highest and best use and should be a last resort. However, applying the University of Tennessee parking metrics for parcels with obstacles or imperfections given its dense tree cover results in the ability to potentially create 49 parking spaces on its 0.54 acres.
- Parcel C, covering 0.50 acres in a rectangular shape, is the site of the former tennis courts and current basketball courts affords a better parking option than Parcel B. To utilize this area as parking the basketball courts will need to be relocated but using the parking metrics described above would yield an additional 75 parking spaces.

Given the condensed time frames when parking is truly an issue at Wright Street Park serious consideration should be given to the cost versus benefit in financial terms of creating additional parking, as well as the aesthetic considerations for converting Parcel B and to a lesser extent Parcel C to parking.

Objective 1.3: Improve the Utilization of Parcel F

Maximizing the utilization of parcel F's 1.33 acres affords the greatest opportunity to reimagine Wright Street Park. A performance band shell has been mentioned frequently in conversations about potential improvements to the park, in fact it was one of the most popular requests during the public input process with twelve mentions. Parcel F is the most logical location given its size and the footprint required to properly site a band shell.



Given the wide variety of band shell options it is recommended that should the community desire to pursue this addition to Wright Street Park that the City begin conversations with an architect to determine the appropriate size, style, and location and orientation of such a structure within parcel F. At that point more realistic cost estimates can be determined to validate the band shell's viability for Wright Street Park.

Another option for this parcel, even if a band shell were developed, would be the addition of a trail loop through this parcel and throughout the entire park, possibly including a fitness station section, similar to what is being developed in Hillsdale. However, if it is determined that a band shell is not a feasible addition for the park, parcel F, given its size, affords the opportunity for a true reimagining of Wright Street Park with some of the options discussed in this section and likely with some additions that have not yet been discussed.

Objective 1.4: Feasibility of a Splash Pad for Wright Street Park

Another popular request during the public input process was for a splash pad, which was mentioned eleven times. Such an addition could be located anywhere within Wright Street Park but given the need for water service and to minimize costs it is recommended to place a splash pad on parcel E. Assuming the splash pad dimensions are 80'x 40' (3,200 square feet, or 0.073 acre) this parcel's 0.25 acre size could easily accommodate the splash pad and still have capacity for additional amenities such as cornhole or beach volleyball.

Typical construction costs for splash pads range from \$41 to \$61 per square foot resulting in an estimated cost of \$131,200 to \$195,200 for the dimensions described above.



Objective 1.5: New, Improved, or Refurbished Playground Equipment

Adding additional playground equipment and refurbishing the existing equipment, where necessary, were popular responses (eleven) during the public input process. This is an easy, relatively low-cost, objective that can be accomplished in the near term. It is recommended that the City make every effort to refurbish the “vintage” equipment within the park given its uniqueness. The existing playground location within Wright Street Park (parcel D) has the size, 0.16 acre, to accommodate additional equipment.



Objective 1.6: More Trails in Wright Street Park

Walking, preferably along trails and paths, continues to be the most universally desired recreational activity in the country. The desire for trails throughout Wright Street Park was mentioned eight times during the public input process. The feasibility of developing a trail loop throughout the park should be explored further in combination with expanding and enhancing the trails currently found in parcel B. A trail loop throughout the park will logically meander through parcel F, which given its open space affords the opportunity to implement fitness stations along that section of potential new trail. Such a development, the Rotary Fitness Park, is underway in Hillsdale and includes a 6,400 square foot FitCore extreme fitness area and a 2,650 square foot HealthBeat fitness station area. The cost for the FitCore extreme fitness equipment is approximately \$110,000 while the HealthBeat fitness station equipment is \$66,000. Total development costs for the two fitness areas at the Rotary Fitness Park is approximately \$253,000 which includes installation and contingencies. The cost for implementing such an amenity with an expanded trail network through Wright Street Park would likely necessitate grant funding and require a longer term implementation schedule.

Another possibility for developing an expanded trail network throughout Wright Street Park would be to explore the feasibility and compatibility of extending trails through the “Drake” property, which is the proposed site of the dog park. Assuming trails and a dog park are compatible this option should be explored to provide an option for nature trails in Wright Street Park.



Objective 1.7: Install Pickleball Courts

Pickleball is the fastest growing recreational activity amongst the forty-five and older population and continues to grow in general popularity. It is currently estimated that 4.8 million people play pickleball in the United States with a growth rate of 14.8 percent from 2020 to 2021, which followed a 21.3 percent growth rate between 2019 and 2020. Within the Region 2 area Jackson County is converting tennis courts at Sparks Park to eight pickleball courts with the capacity to add an additional six courts if demand merits. The County is also considering a proposal to develop an indoor pickleball facility at Keeley Park, formerly known as the Jackson County Fairgrounds. Interest in pickleball is also evident in Jonesville as pickleball courts were requested six times during the recreation plan public input process. Key components of a pickleball complex include:

- Court Base: should be concrete and installed over 4" of sand for moisture drainage.
- Lighting: large courts could be equipped with one 1,000 watt quartz fixture at each corner. Smaller courts can be well lighted with two 1500 watt quartz fixtures.
- Court Surface Finish: the most common finish is called 'Plexi-Pave' which consists of a gritty material.
- Fencing: should be 10' high around the perimeter of the overall facility.

The play area of a pickleball court is 30' x 60' which encompasses the standard court of 20' x 44'. Since each individual court is 1,800 square feet a four court complex would require 7,200 square feet, or 0.165 acre, and would fit comfortably within the footprint

of parcel C's 0.50 acre size while still leaving space for renovated basketball courts or installation of beach volleyball on the same parcel.

The accepted industry cost for concrete pickleball court construction in 2020 was \$40,000 per court. This included the concrete base, color coating (Plexi-Pave), lines, nets, fencing, and lighting. Factoring price increases since that time, it is assumed a four court pickleball complex could be built for \$160,000 - \$200,000. Annual maintenance costs for such a facility should be anticipated at \$5,000 to \$6,000.



Objective 1.8: Additional Improvements and Additions to Consider

Parcels C (0.50 acres); parcel E (0.25 acres); and parcel F (1.33 acres) offer the most opportunity for additional improvements and/or additions to Wright Street Park. The most promising ideas mentioned for improvements or additions to Wright Street Park during the public input phase included:

- ***Objective 1.8.1: Beach Volleyball Courts***

The four (4) beach volleyball courts shown in this picture from Lebanon (IN) Memorial Park are double-loaded two by two with an overall area measuring 15,000 square feet (150' L x 100' W).



Developing two courts, each 30' W x 60' L, in a side-by-side manner for Wright Street Park would require an overall area of 100' W x 75' L (.172 acre) with sand one foot deep. Building the courts would require 278 yards or 445 tons of sand at an estimated cost of \$11,125. Beach volleyball nets cost an average of \$3,000 each, so from a materials perspective installation of two beach volleyball courts for Wright Street Park would have an anticipated cost of \$17,125 plus labor. Two beach volleyball courts as described above require a total site of 0.172 acres meaning parcel E (0.25 acres); parcel A (0.50 acres); or parcel F (1.33 acres) in that order would be ideal locations within Wright Street Park for their installation.

- ***Objective 1.8.2: Improve, Expand, or Relocate Wright Street Park Basketball Courts***

The most cost effective solution for improved basketball courts at Wright Street Park would be to renovate the existing courts located in the southern portion of parcel C.



The two most logical improving and/or expanding the basketball courts at Wright Street Park are:

- *Option A:* this option would be the development of two 94' x 50' regulation courts laid out in a side-by-side manner with five feet of additional hard surface along the exterior of each side of the courts and ten feet of hard surface between each court. Assuming concrete (\$10/sf) is utilized as the hard surface the surfacing cost for two courts (12,480 sf) would result in \$124,800 in surfacing costs alone. Asphalt could be a less expensive surface to explore. Two courts would require four goals, with polycarbonate the preferred material, at a cost of \$2,000 each, although less expensive options are available. Total anticipated material cost, without any labor, but with a small contingency is assumed at \$135,000.00.
- *Option B:* this option would be the development of one 94' x 50' regulation court with an additional 30' x 30' shooting court and a 35' x 45' three-on-three court with the additional courts laid out in a stacked manner next to the regulation court. Such a layout would encompass an overall hard surface area of 104' x 100' resulting in a total area of 10,400 square feet of hard surface at an overall cost (\$10/sf) of \$104,000 utilizing concrete as the surface material. Again polycarbonate is the preferred goal material and this layout would require four goals at a cost of \$8,000 (\$2,000 each) bringing the total anticipated material cost, without any labor, but with a small contingency to \$115,000 for this option.
- *Additional Recommendation:* It is recommended that lighting be provided for the basketball courts in either option described above. Lighting costs vary depending on the number, style, and type of lighting preferred but a rough estimate would be for these costs to range between \$50,000 and \$150,000.00.
- *Siting Recommendation:* Options A (0.286 acres) and B (0.238 acres) for new basketball court development are similar in size resulting in a wide variety of siting locations within Wright Street Park depending on what additional amenities are desired for the improvement of the park overall. Recommend siting, in order of preference, for either Option A or Option B would parcel A (0.50 acres); parcel F (1.33 acres); or parcel E (0.25 acres), which would only work for the layout described in Option B.

- **Objective 1.8.3: Add Concrete Cornhole Boards**

A relatively low cost improvement for Wright Street Park that came through the public input process was for the addition of concrete cornhole boards. The cost for a pair of concrete cornhole boards is \$1,325.00 and a typical cornhole “court” is 8’ wide x 40’ in length with a distance of 27 feet between the front edge of each board for competitions. Given the relatively modest cost and dimensions for one cornhole court it is recommended the City pursue the development of a four court arrangement for cornhole at Wright Street Park. Assuming an overall area of 56’ wide by 50’ feet in length (2,800 square feet or 0.064 acre) would accommodate four cornhole courts with each court eight feet wide by forty feet in length with six feet in space between each court and three feet of additional surface on the outside of each outer court and an additional five feet beyond the playing surface at each end of all the courts. Total cost for four pairs of cornhole boards in this scenario would be \$5,300.00. There appear to be many options for playing surface so one was not specified, although most appear to be relatively low cost. Labor costs for preparation of the courts was also not estimated but it is assumed that installation, including cornhole boards, for four cornhole courts would be in the range of \$10,000.00 - \$15,000.00.

- *Siting Recommendation:* Given the small amount of area (0.064 acre) required to site four cornhole courts in the manner described above it is recommended that they be sited at parcel E (0.25 acre) or parcel F (1.33 acres).



- **Objective 1.8.4: Add Little Free Library to Wright Street Park**

Another relatively simple addition to Wright Street Park that was mentioned multiple times in the public input process was the addition of one or more Little Free Libraries to the park. Costs for prefabricated structures range between \$250.00 and \$500.00 each so it is assumed two such libraries could be installed in Wright Street Park for a total cost of between \$500.00 and \$1,000.00. The most logical locations for a Little Free Library would be near the driveway entrance off Wright Street or near the shelter area of the park.



Goal 2: Update Carl Fast Memorial Park

Carl Fast Memorial Park is a passive park on the eastern edge of downtown Jonesville with a quiet, serene feel given the abundance of large shade trees despite, its location on US 12 and the large volume of vehicular traffic the road carries. The updates needed to this park are minimal in nature and should be relatively low cost and easily actionable within in a more immediate time frame than those at Wright Street Park. Goals for updating Carl Fast Memorial Park will generally focus on:

- Increasing usage and pleasure people get from the park by updating equipment and benches
- Keeping the space popular as a place for meeting and relaxation





Objective 2.1: Renovate Playground Equipment at Carl Fast Park

Given the overall passive nature of the park there is no need to add additional playground equipment to Carl Fast Park, however the existing equipment should be refurbished and preserved due its whimsical nature which adds uniqueness to the space.

Objective 2.2: Update Existing Amenities and Add Additional Appropriate Amenities

The existing site amenities within Carl Fast Park are showing evidence of age and disrepair and should be addressed. There is also the opportunity to add smaller scale additional amenities that can serve as activators without compromising the passive integrity of the park.

- **Objective 2.2.1: Update Existing Amenities**

A simple upgrade to Carl Fast Park is to replace the existing site amenities such as benches, trash receptacles and picnic tables that are showing their age or are in disrepair. It is recommended that a simple inventory and replacement schedule be developed for these amenities, focusing on replacing the ones in the worst condition first. A preferred style and model should be determined for the new site amenities to maintain a cohesive feel and look within the park.



- **Objective 2.2.2: Add Concrete Cornhole Boards**

A relatively low cost improvement for Carl Fast Park that came through the public input process was for the addition of concrete cornhole boards. The cost for a pair of concrete cornhole boards is \$1,325.00 and a typical cornhole “court” is 8’ wide x 40’ in length with a distance of 27 feet between the front edge of each board for competitions. Similar to what has been proposed at Wright Street Park, given the relatively modest cost and dimensions for one cornhole court it is recommended the City pursue the development of a two court arrangement for cornhole at Carl Fast Park. Assuming an overall area of 30’ wide by 50’ feet in length (1,500 square feet) would accommodate two cornhole courts

with each court eight feet wide by forty feet in length with six feet in space between each court and four feet of additional surface on the outside of each outer court and an additional five feet beyond the playing surface at each end of the courts. Total cost for two pairs of cornhole boards in this scenario would be \$2,650.00. There appear to be many options for playing surface so one was not specified, although most appear to be relatively low cost. Labor costs for preparation of the courts was also not estimated but it is assumed that installation, including cornhole boards, for two cornhole courts would be in the range of \$5,000.00 - \$7,500.00.



- **Objective 2.2.3: Add Little Free Library to Carl Fast Park**

Another relatively simple addition to Carl Fast Park that was mentioned multiple times in the public input process was the addition of one or more Little Free Libraries to the park. Costs for prefabricated structures range between \$250.00 and \$500.00 each so it is assumed two such libraries could be installed in Carl Fast Park for a total cost of between \$500.00 and \$1,000.00. The most logical locations for a Little Free Library would be southeast and southwest corners of the park.



Objective 2.3: Examine Feasibility of Locating Band Shell in Carl Fast Park

Given the wide variety of band shell options it is recommended that should the community desire to pursue the development of a band shell, locating it in Wright Street Park should be the priority. However, if it is determined that Wright Street Park is not the right location for a band shell the City should consider the northeast corner of Carl Fast Park as a possible location. Locating a band shell in Carl Fast Park could result in higher usage of such a facility given the park's close proximity to downtown Jonesville. If the City feels Carl Fast Park is a viable option then it is advised that the City begin conversations with an architect to determine the appropriate size, style, and location and orientation of such a structure within the park. At that point more realistic cost estimates can be determined to validate the band shell's viability for this location.



Goal 3: Improve Pedestrian Connectivity with Additional or Improved Sidewalks and Nonmotorized Trails

Improving pedestrian connectivity through new and improved sidewalks and nonmotorized trails was mentioned frequently in the public input process. This has also been a long-term goal identified in previous versions of the Jonesville & Fayette Township Joint Recreation Plan. The following objectives have been identified to improve connectivity throughout the community:

Objective 3.1: Update and Add Sidewalks for Improved Pedestrian Connectivity

An analysis of the existing sidewalk network has been undertaken as part of this plan and has prioritized and identified areas of the city most in need of connectivity upgrades and investment as the sidewalk and nonmotorized systems extend throughout the community.

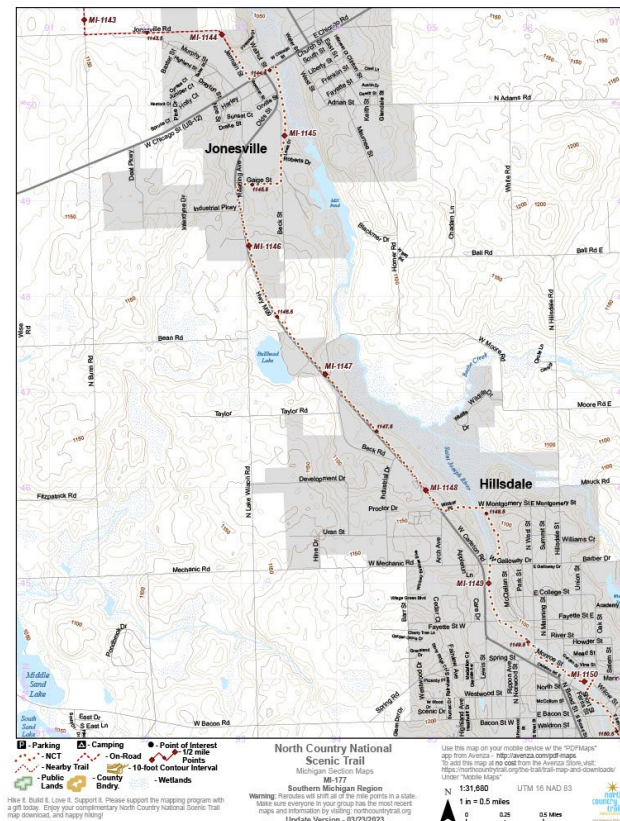
- Paved routes increase accessibility for all populations
- Increase access to businesses and schools while promoting safety
- Promoting engaging, interactive activities to senior populations helps combat the health risks associated with social isolation and loneliness: simply taking a neighborhood walk could be incredibly beneficial to an elderly person



Objective 3.2: Continue to Invest in Nonmotorized Trail Development and Upgrades

It is recommended that the City continue to actively seek to work with partners such as the Headwaters Recreational Authority to continue to expand the nonmotorized network throughout the city and to seek connections with neighboring communities. Continued maintenance and investment in existing trails, such as the Jerry Russel Trail, is also recommended.

Embracing the North Country National Scenic Trail, the country's longest National Scenic Trail stretching 4,800 miles across eight states, as it passes through the city should be a priority. Pursuing a "Trail Town" designation from the North Country Trail Association's Trail Town program should be pursued. Becoming a Trail Town can grow awareness and support for the North County Trail, improve access and information to get members of the community active in the outdoors and boost the economic benefits by providing recognition to local businesses.



Objective 3.3: Study the Feasibility of Developing Mountain Bike Trails

Region 2 Planning Commission through its Southern Michigan Outdoors initiative is leveraging the region's outdoor recreation assets for economic development purposes through a three-pronged approach focusing on talent attraction and retention, outdoor recreation event development, and furthering the rec tech entrepreneurial ecosystem. A key priority within these efforts is to identify potential locations within the Region 2 area for the development of mountain bike trails with the goal of attracting enthusiasts to the communities where such trails are located, which in turn will generate economic impact. It is recommended the City begin the longer range planning of determining feasible locations within Jonesville for such trail development.



Goal 4: Provide Access to the St. Joseph River

Water connectivity to lakes, rivers, and streams, continues to be one of the most popularly desired recreational activities in the country. The need for improved access to the St. Joseph River has long been a recognized community desire dating to at least the 2009- 2013 edition of the Jonesville & Fayette Township Joint Recreation Plan.

Objective 4.1: Provide New or Enhanced Opportunities for Canoeing, Kayaking, and Other Riverine Activities

Identify and support projects that improve river access for Riverfest and other activities. Highest priority should be given to projects that provide the easiest accessibility to the river in order to gain momentum for further activation of the river. To stimulate river activation explore the possibility of partnering with local businesses and institutions to build canoe/kayak launches and fishing platforms in appropriate locations along the river.

Additionally, connections between the river and the non-motorized network should be created, expanded, and encouraged whenever possible.

Objective 4.2: Explore the Feasibility of Developing a St. Joseph Riverwalk

A long range goal should be to explore the feasibility of developing a riverwalk along the St. Joseph River to activate the waterway and provide opportunity for Jonesville residents to more actively engage with the river.

This page intentionally blank.



Chapter 6

Action Plan

City of Jonesville 2023-2028 Recreation Plan

This page intentionally blank.



	<u>Cost:</u>	<u>Lead Entity:</u>	<u>Implementation:</u>
Goal 1: Improvements to Wright Street Park			
Objective 1.1: Create an Off Leash Dog Park on the “Drake” Property	\$30,000.00	City of Jonesville	Short Term
Objective 1.2: Improve the Parking at Wright Street Park	TBD	City of Jonesville	Medium Term
Objective 1.3: Improve the Utilization of Parcel F (Band Shell)	TBD	City of Jonesville	Long Term
Objective 1.4: Feasibility of a Splash Pad	\$200,000.00	City of Jonesville	Long Term
Objective 1.5: New, Improved, or Refurbished Playground Equipment	TBD	City of Jonesville	Immediate
Objective 1.6: Wright Street Park Trails	TBD	City of Jonesville	Short Term
Objective 1.7: Install Pickleball Courts	\$200,000.00	City of Jonesville	Medium Term
Objective 1.8.1: Beach Volleyball Courts	\$25,000.00	City of Jonesville	Short Term
Objective 1.8.2: Improve, Expand, or Relocate Basketball Courts	\$225,000.00	City of Jonesville	Medium Term
Objective 1.8.3: Cornhole Courts	\$15,000.00	City of Jonesville	Immediate
Objective 1.8.4: Little Free Library	\$1,000.00	City of Jonesville	Immediate
Goal 2: Update Carl Fast Park			
Objective 2.1: Renovate Playground Equipment	TBD	City of Jonesville	Immediate
Objective 2.2.1: Update Existing Amenities	TBD	City of Jonesville	Immediate
Objective 2.2.2: Cornhole Courts	\$7,500.00	City of Jonesville	Immediate
Objective 2.2.3: Little Free Library	\$1,000.00	City of Jonesville	Immediate

Objective 2.3: Band Shell	TBD	City of Jonesville	Long Term
---------------------------	-----	--------------------	-----------

Goal 3: Improve Pedestrian Connectivity

Objective 3.1: Update and Add Sidewalks for Improved Connectivity	TBD	City of Jonesville	Long Term
---	-----	--------------------	-----------

Objective 3.2: Continue to Invest in Nonmotorized Trails	TBD	City of Jonesville	Short Term
--	-----	--------------------	------------

Objective 3.3: Feasibility of Mountain Bike Trails	TBD	City of Jonesville	Medium Term
--	-----	--------------------	-------------

Goal 4: Provide Access to the St. Joseph River

Objective 4.1: Opportunities for Canoeing/Kayaking/Other Activities	TBD	City of Jonesville	Short Term
---	-----	--------------------	------------

Objective 4.2: Feasibility of St. Joseph Riverwalk	TBD	City of Jonesville	Long Term
--	-----	--------------------	-----------

Implementation timing is as follows:

- Immediate: 1 – 12 months
- Short Term: 1 – 3 years
- Medium Term: 3 – 5 years
- Long Term: 5+ years

Implementation timing suggestions are based on factors such as cost, ease of putting objective into place, and expressed interest in the objective garnered during the public input process. Implementation of objectives can be adjusted as opportunities present themselves to fund particular objectives.



Appendix A

Demographics

City of Jonesville 2023-2028 Recreation Plan

This page intentionally blank.





Appendix B

Public Input

City of Jonesville 2023-2028 Recreation Plan

This page intentionally blank.





Appendix C

Maps

City of Jonesville 2023-2028 Recreation Plan

This page intentionally blank.





Jerry Russel Trail

Appendix D

Summary of Other Trail Planning Efforts

City of Jonesville 2023-2028 Recreation Plan

This page intentionally blank.

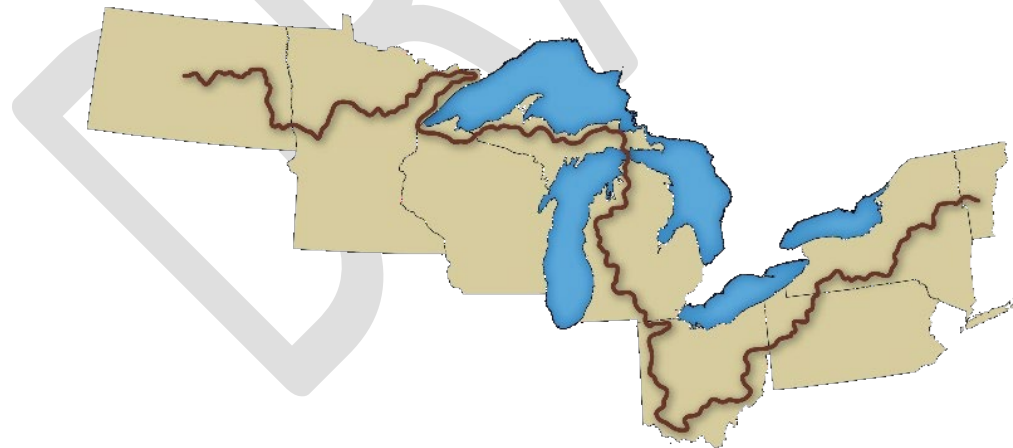
Summary of Other Trail Planning Efforts:

Headwaters Recreational Authority

The Headwaters Recreational Authority has published a [Recreation and Pathway Plan](#) that “provides the framework under which the community will plan for and construct pathways, provide linkages to existing non-motorized infrastructure (e.g. sidewalks), and support alternate modes of transportation.” The plan includes discussion of the Jerry Russel Trail for Jonesville, which has been completed, and also proposes the development of develop a non-motorized a path from Jonesville to Hillsdale, as well as other trails connecting Jonesville to paths that are north of the city.

North Country Trail

The North Country National Scenic Trail is the longest in the National Trails System, stretching 4,800 miles across eight states from North Dakota to Vermont, with the largest section, 1,150 miles, traversing Michigan. The Trail traverses through more than 160 federal, state and local public lands, including 10 National Forests, four areas of the National Park Service, and over 100 state parks, forests and game areas.¹



¹ <https://northcountrytrail.org/the-trail/explore-the-trail/>

The Chief Baw Beese Chapter's section of the North Country Trail begins north of Litchfield at the Calhoun/Hillsdale county line, where farming country is somewhat more rolling. Litchfield, the Chapter's first official Trail Town, offers a welcoming hiking trail to the center of town, and several more opportunities for hikers' needs to be met.

The Chief Baw Beese section also utilizes the Baw Beese Trail created by the City of Hillsdale, and the connector with its close neighbor, Jonesville, and goes through tiny-but-growing Osseo. Jonesville has worked closely with the local Chief Baw Beese Chapter to improve trails around the town, most prominently the Jerry Russel Trail. The section also includes the 3 mile Hill-Jo trail that runs along M-99 heading south out of Jonesville towards Hillsdale. Many, including those in the community and members of the Chief Baw Beese Chapter would like to see this trail moved away from the road to a safer and more scenic route. The local chapter also runs hikes on the section through Jonesville, often ending at a restaurant, helping to boost the local economy.

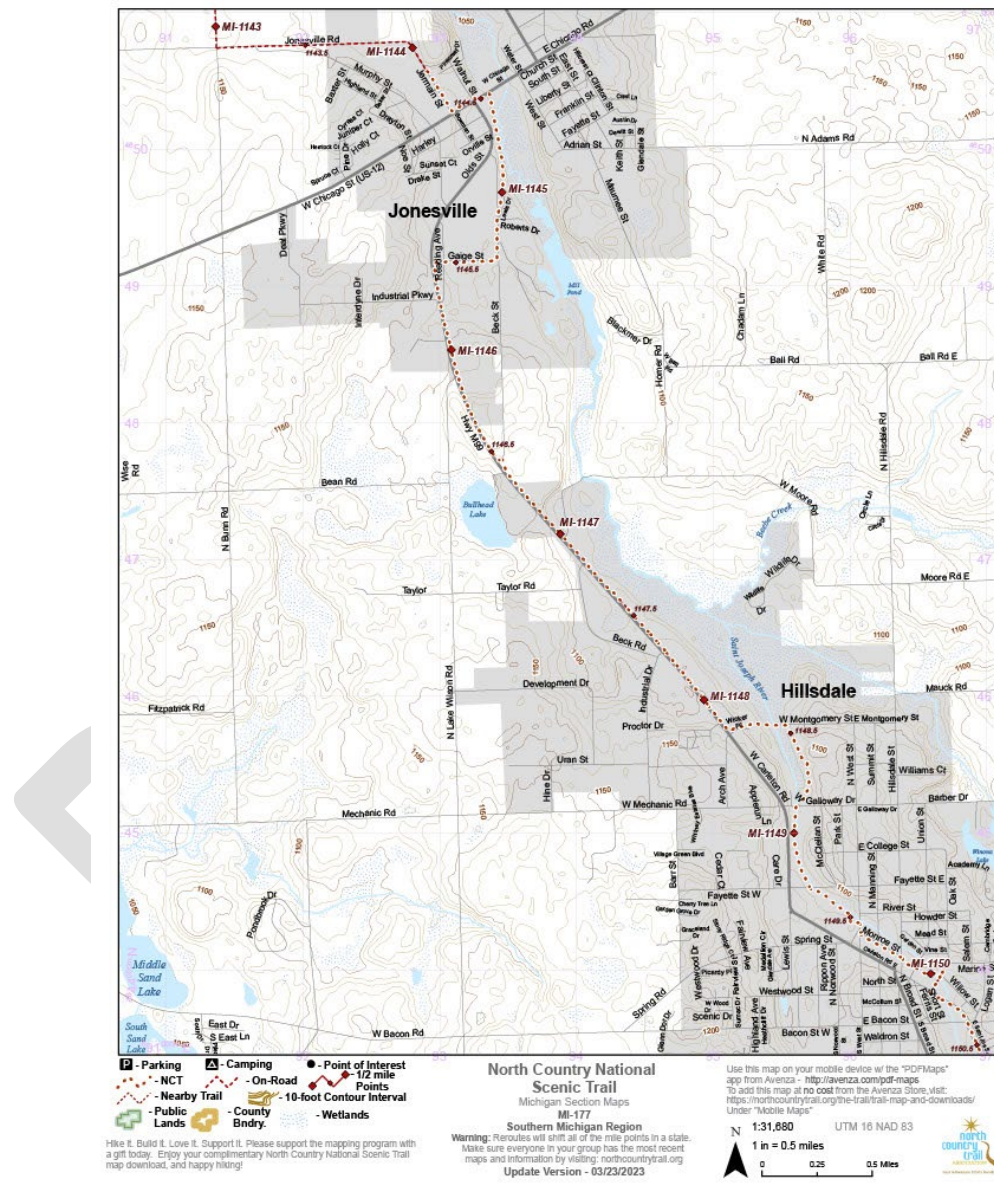
Great Lake to Lake Trails

There is currently an effort to establish five (5) trails across Michigan connecting Great Lake to Great Lake, with three (3) planned for the Lower Peninsula and two (2) more for the Upper Peninsula. Route 1 runs closest to Jonesville going through Jackson County cities including Jackson and Concord as it traverses the state from Port Huron to South Haven with a length 275 miles. It is also the most complete of the routes, and people have been riding it for a few years now.

Iron Belle Trail

The Iron Belle Trail is actually two trails covering Michigan from Belle Isle in Detroit to the far Western tip of the Upper Peninsula. Using existing trail networks and forging new connections, the Iron Belle Trail runs for 2,000 miles, crossing through 48 different Michigan counties, with a route for hiking and a route for biking. It is currently 71% complete.² Like Route 1 of the Great Lake to Lake Trail, it does not reach Jonesville, but crosses through Jackson and Homer before winding its way north.

² <https://www.michigan.gov/dnr/places/state-trails/iron-belle>





This page intentionally blank.